

# How To Realize Content Analysis in Web-Scale Multimedia Image Search

Xian-Sheng Hua

Lead Researcher, Microsoft Research Asia, Beijing, China

July 7, 2010 – CIVR 2010 – Xi'an, China

# Towards Web-Scale Content-Aware Internet Multimedia Search

Xian-Sheng Hua

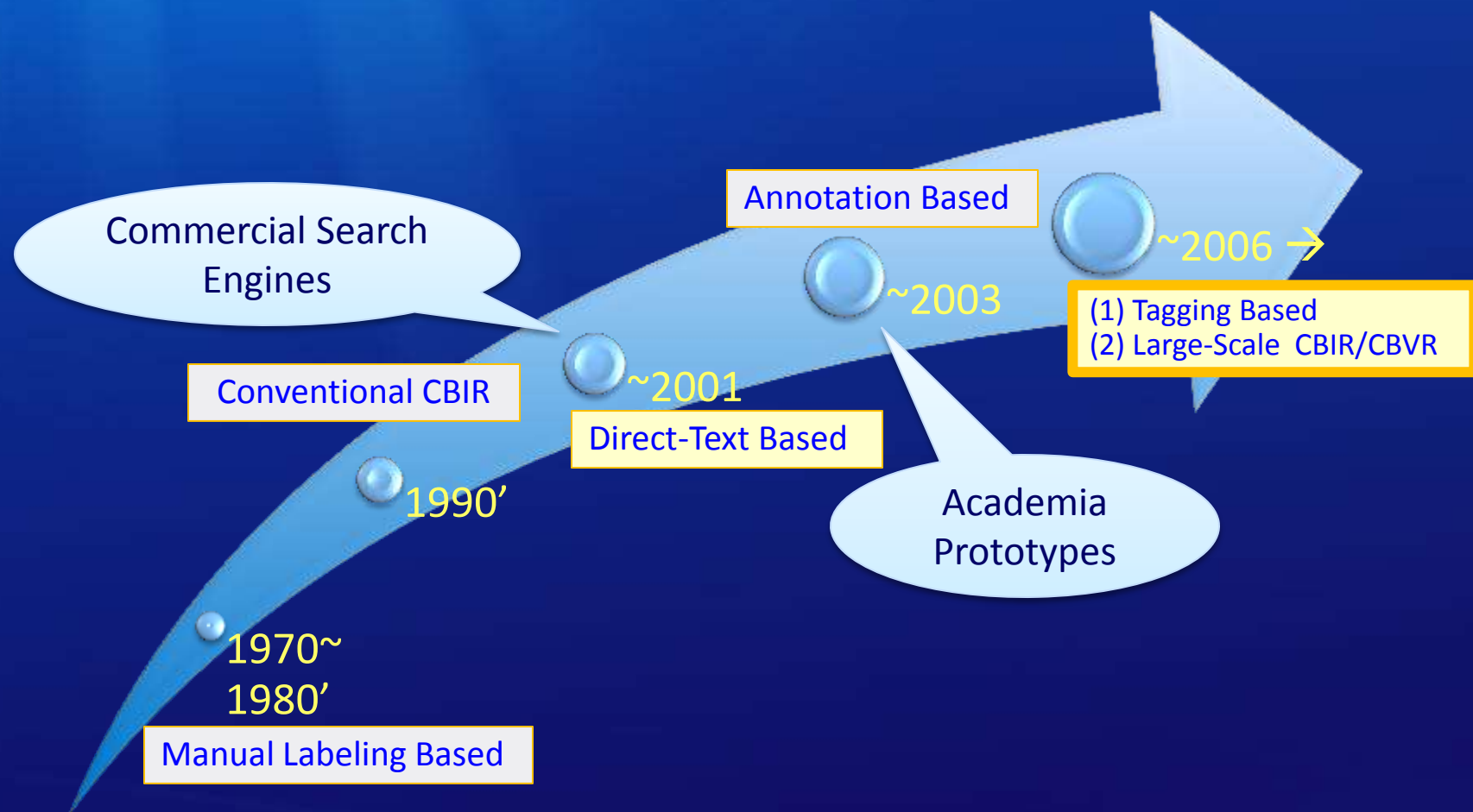
Lead Researcher, Microsoft Research Asia

July 7, 2010 – CIVR 2010 – Xi'an, China

# About the Title

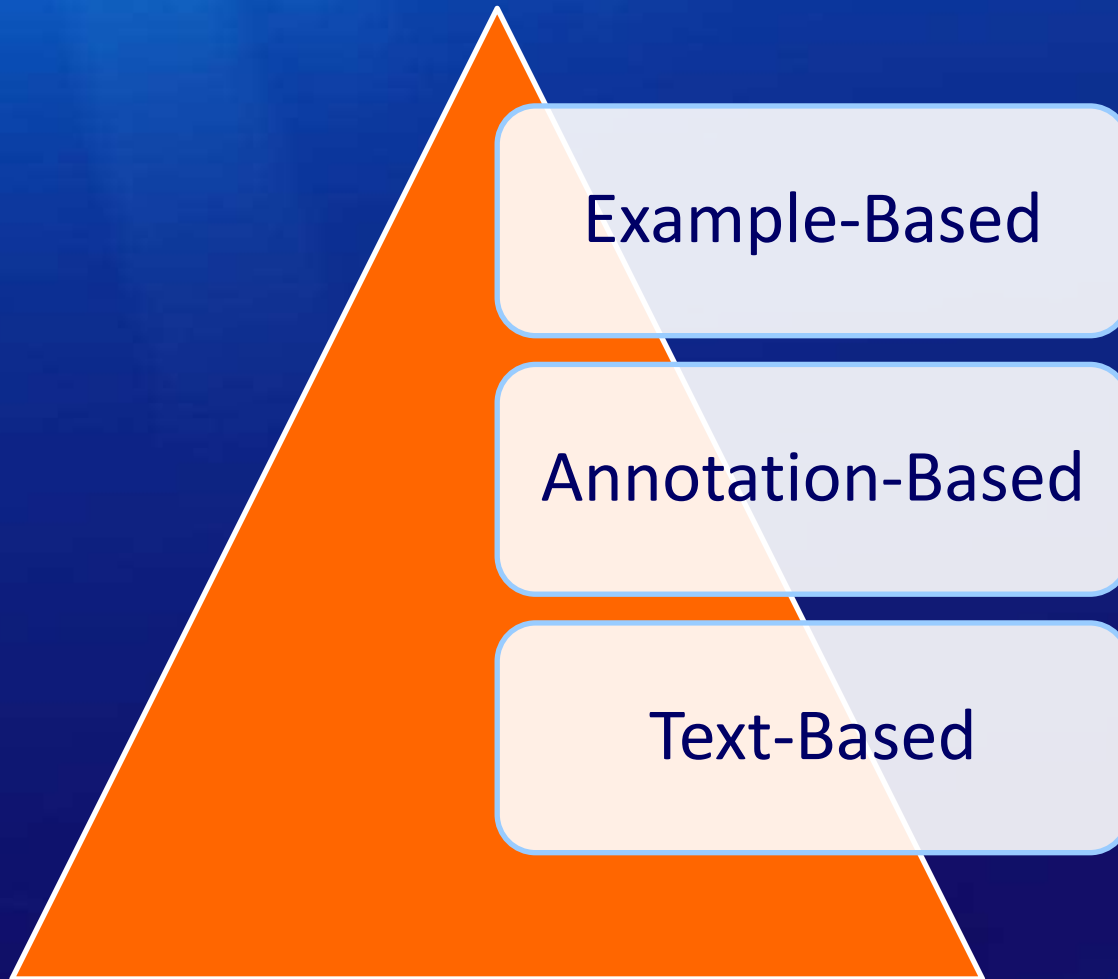
- Towards Web-Scale Content-Aware Internet Multimedia Search
  - Towards ...
  - Web-Scale ...
  - Content-Aware ...
  - Internet ...
  - Multimedia ...
  - Search ...

# Evolution of CBIR/CBVR





# Three Schemes

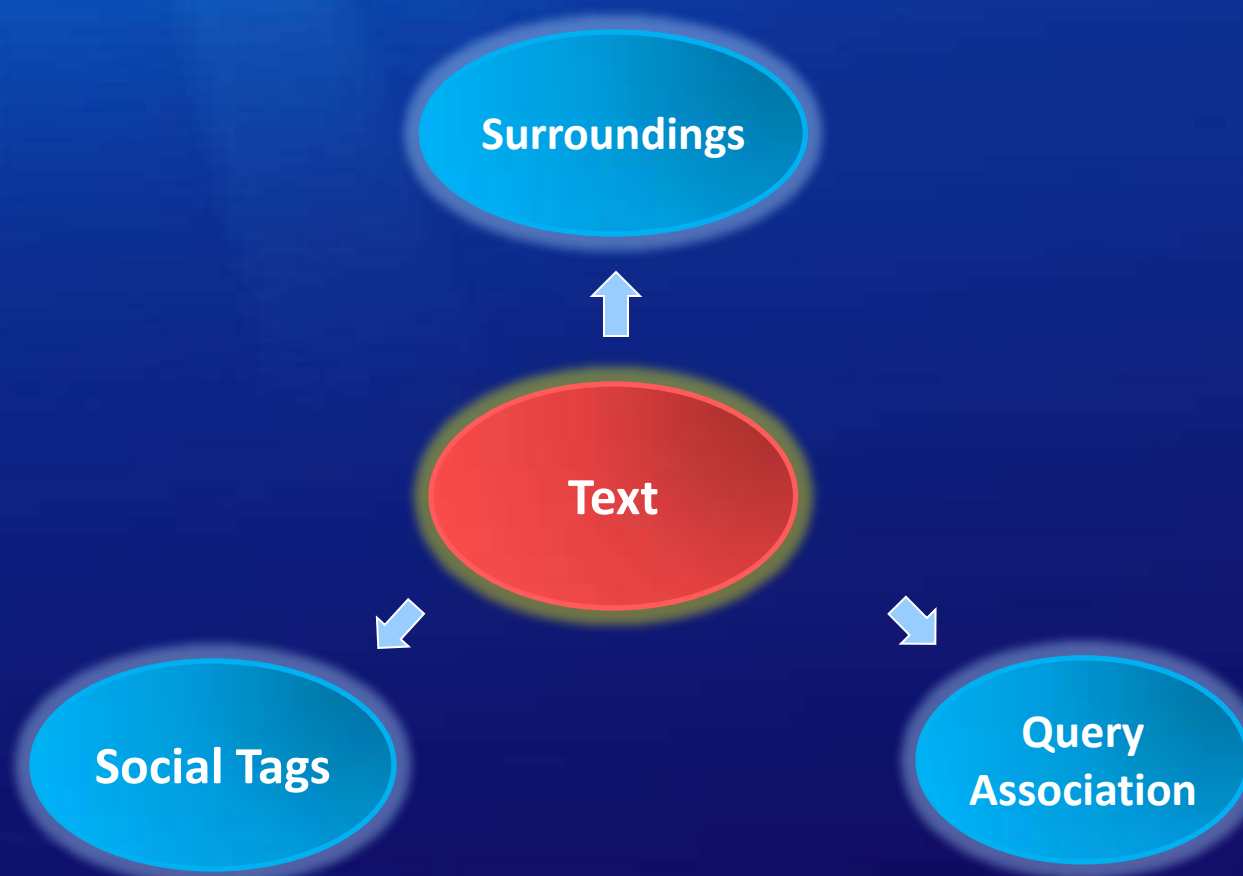


Example-Based

Annotation-Based

Text-Based

# Limitation of Text-Based Search



# Limitation of Text-Based Search

- High noises
  - Surrounding text: frequently not related to the visual content
  - Social tags: also noisy, and a large portion don't have tags
- Mostly only covers simple semantics
  - Surrounding text: limited
  - Social tags: People tend to only input simple and personal tags
  - Query association: powerful but coverage is still limited (non-clicked images will never be well indexed)

## A complex example:

Finding Lady Gaga walking on red carpet with black dress



Lady Gaga walking on red carpet and wearing in black Search

SafeSearch moderate

About 125,000 results (0.20 seconds)

Advanced search

Everything Images More

Any size Medium Large Icon Larger than... Exactly...

Any type Face Photo Clip art Line drawing

Any color Full color Black and white



LOVES Gaga's. 461 x 533 - 66k - jpg blog.kimmydavis.com Find similar images



Lady GaGa on The Ellen 490 x 361 - 52k - jpg lifeanddeathclothing.net Find similar images



Gaga hits the VMA red carpet, 465 x 570 - 93k - jpg culturefiyy.com



Picture of Lady Gaga walking 309 x 400 - 41k - jpg galechesterwhittington2...



Lady Gaga wanted to walk down 300 x 300 - 17k - jpg contactmusic.com Find similar images



There was Lady Gaga in her 600 x 400 - 282k fashionist.ca



red carpet wearing a black 321 x 512 - 31k - jpg examiner.com



Lady Gaga wanted to walk down 500 x 500 - 66k - jpg thebosh.com



A-list star walking the red 353 x 512 - 48k - jpg examiner.com



Lady Gaga 293 x 473 - 142k - jpg uk.eonline.com



Lady Gaga wore a spiraled 500 x 398 - 70k - jpg poshposh.com



lady gaga 2 409 x 570 - 102k - jpg fashionfeen.wordpress.com Find similar images



Lady Gaga Viva Glam Disease 423 x 580 - 58k - jpg rickey.org



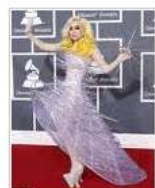
Photo of Lady Gaga arriving at 331 x 400 - 52k - jpg galechesterwhittington2...



Walking the red carpet of the 600 x 559 - 117k - jpg aceshowbiz.com Find similar images



Lady Gaga walking the Red 480 x 360 - 14k - jpg dipity.com



Outrageous: Lady Gaga poses on 468 x 594 - 86k - jpg dailymail.co.uk



She is a walking art piece! 405 x 567 - 36k - jpg posh24.com

# Limitation of Annotation-Based Search

- Low accuracy
  - The accuracy of automatic annotation is still far from satisfactory
  - Difficult to be solved
- Limited coverage
  - The coverage of the semantic concepts is still far from the rich content that is contain in an image
  - Difficult to extend
- High computation
  - Learning costs high computation
  - Recognition costs high if the number of concepts is large

Still has a long way to go



# Limitation of Large-Scale Example-Based Search

- You need an example first
  - How to do it if I don't have an initial example?
- Large-scale (semantic) similarity search is still difficult
  - Though quite a few approaches were reported (e.g., LSH and its variations)
  - Though the performance of large-scale (near) duplicate detection is acceptable now

An example: TinEye

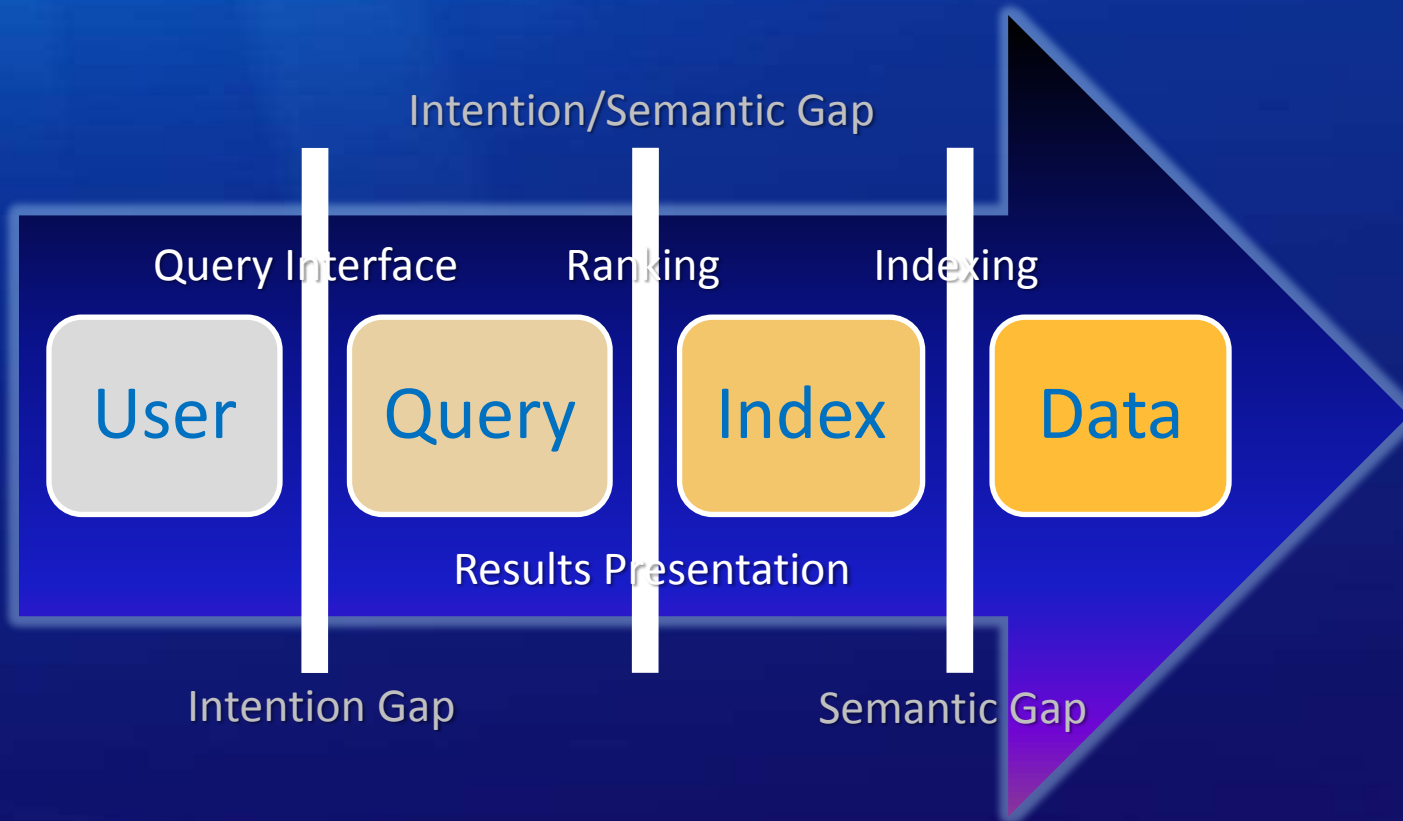
# Possible Way-Outs?

- Large-scale high-performance annotation?
  - Model-based? Data-driven? Hybrid? ...
- Large-scale manual labeling?
  - ESP game? Label Me? Machinery Turk? ...
- New query interface?
  - Interactive search?

Or ... To combine text, content and interface?



# Internet Multimedia Search



# Practical Solutions

- Working on search results
  - Search result presentation
  - Re-ranking
  - ...
- Leveraging text based indexing
  - Combining text and content (large-scale text & small scale content)
  - Indexing content like indexing text (large-scale content)
  - ...
- Interacting with users
  - Dialog-based
  - Interactive query interface
  - ...

# Examples

- Five exemplary technologies
  - Four are shipped features in Microsoft Bing
  - One is a research project

# Ex1: Smart Video Thumbnail

- Shipped in Bing in 2007
  - Credit: Xian-Sheng Hua, et al.
- Basic technology
  - Video summarization (static and motion)
- Special requirement
  - Align the first frame of the motion thumbnail with the static one
  - Low computation cost and storage cost
- Scalability
  - Thumbnail generation: offline but need to be quick enough
  - All videos in Bing has static thumbnail
  - Around half of the videos in Bing index have motion thumbnail





# Ex1: Extension - Smart Video Player



# Smart Video Thumbnail

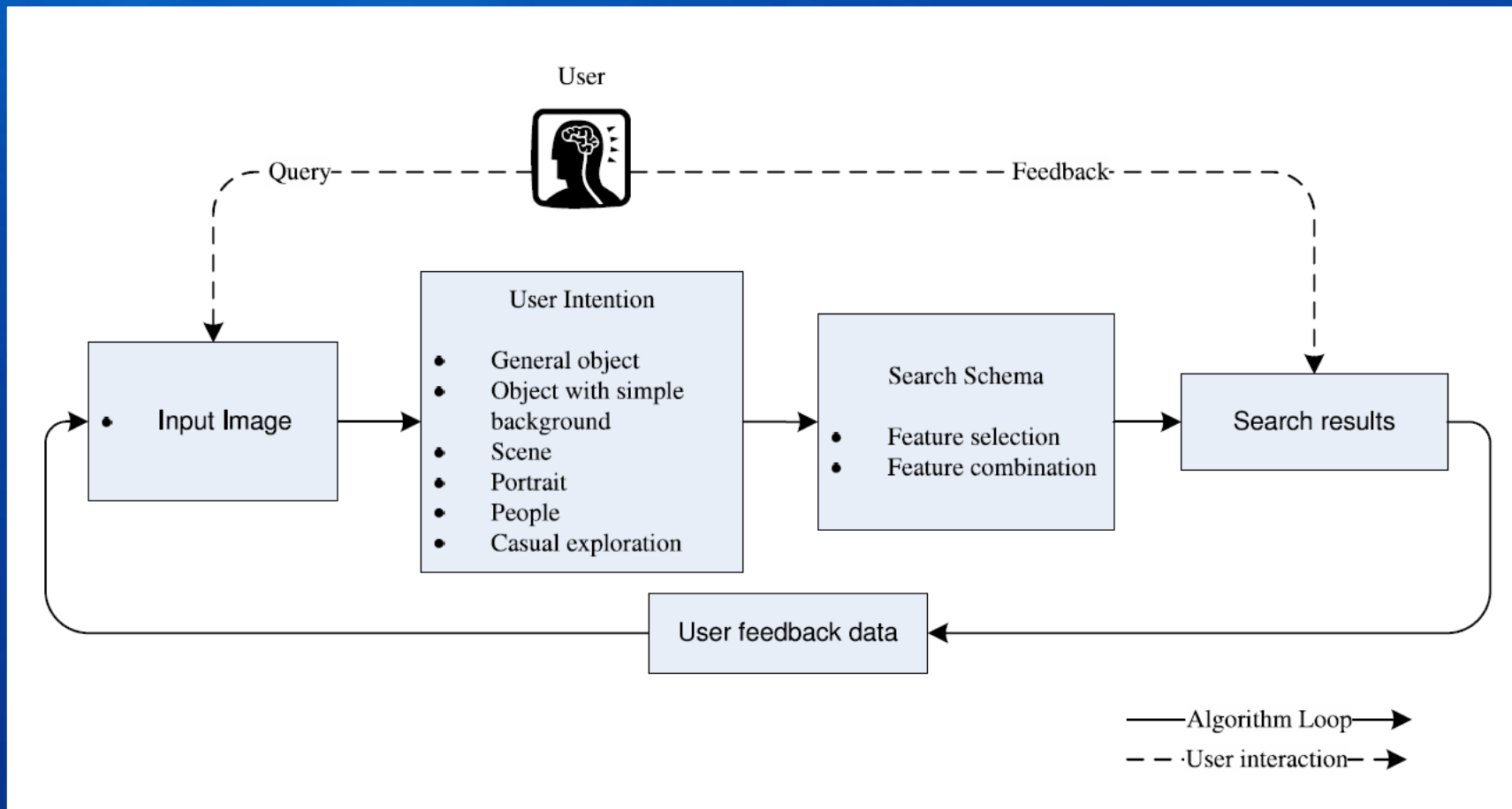
A good example of applying heavy content analysis on web-scale videos through an offline process, and showing the outputs in the search result page in realtime.



# Ex2: Show Similar Images

- Shipped in Bing in 2009
  - Credit: Fang Wen, Jian Sun, Jingyu Cui, et al.
- Basic technology
  - Re-rank the search results according to the selected image
  - CBIR on text-based search results ( $\leq 1000$  images)
- Key idea
  - Estimate users' intent by image categorization (an effective similarity measure)
- Scalability
  - Feature extraction: offline but need to be quick enough
  - Working on web-scale data though each time only need to compare less than 1000 images

# Ex2: Show Similar Images





Xi'an City

Web Images

1-30 of 154,000 results

SafeSearch moderate Change

- SIZE
  - Small
  - Medium
  - Large
  - Wallpaper

- LAYOUT
  - Square
  - Wide
  - Tall

- COLOR
  - Full color
  - Black & white
  - Specific color

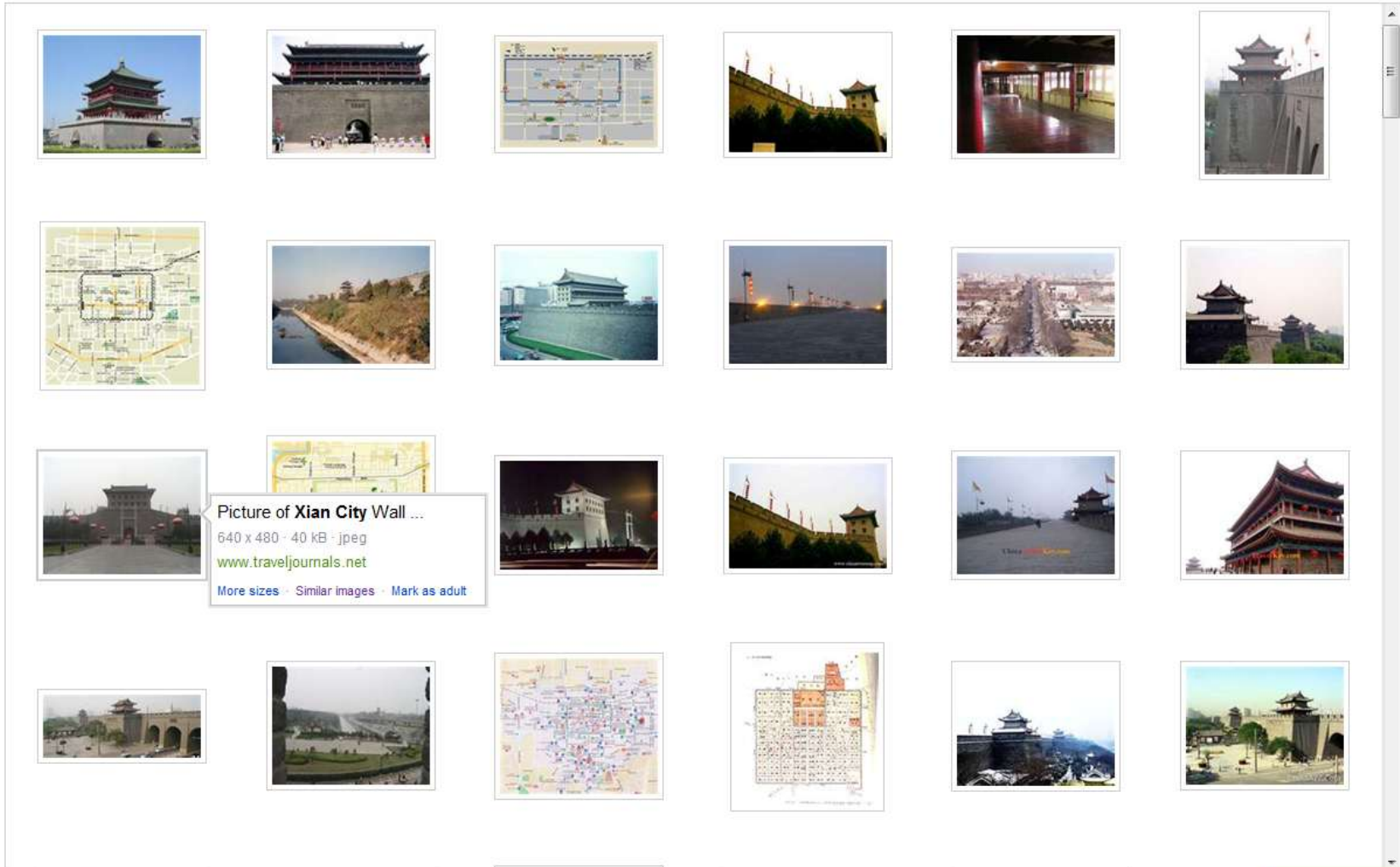
- STYLE
  - Photograph
  - Illustration

- PEOPLE
  - Just faces
  - Head & shoulders

SEARCH HISTORY

- Xi'an City
- grass
- bingmayong
- Xi'an
- url:http://www.devianta
- rt.com/downl...

See all Clear all Turn off



Picture of Xian City Wall ...  
 640 x 480 · 40 kB · jpeg  
[www.traveljournals.net](http://www.traveljournals.net)  
[More sizes](#) · [Similar images](#) · [Mark as adult](#)



Xi'an City

Web Images

Sign in Shibuya-Ku, Tokyo Settings

1-30 of 60 results

SafeSearch moderate Change

- SIZE
  - Small
  - Medium
  - Large
  - Wallpaper

- LAYOUT
  - Square
  - Wide
  - Tall

- COLOR
  - Full color
  - Black & white
  - Specific color

- STYLE
  - Photograph
  - Illustration

- PEOPLE
  - Just faces
  - Head & shoulders

SEARCH HISTORY

- Xi'an City
- grass
- bingmayong
- Xi'an
- url:http://www.devianta
- rt.com/downl...

See all Clear all - Turn off



# Show Similar Images

A good example of applying CBIR/re-ranking on image search results, which works well on web-scale image data.



# Ex3: More Sizes

- Shipped in Bing in early 2010
  - Credit: MSR SVC and Bing Multimedia Search
- Basic technology
  - Large-scale duplicate/near-duplicate image detection
- Scalability
  - Working on the entire Bing image index



Xi'an City

Web Images

SafeSearch moderate Change

- SIZE
  - Small
  - Medium
  - Large
  - Wallpaper
- LAYOUT
  - Square
  - Wide
  - Tall
- COLOR
  - Full color
  - Black & white
  - Specific color
- STYLE
  - Photograph
  - Illustration
- PEOPLE
  - Just faces
  - Head & shoulders
- SEARCH HISTORY
  - Xi'an City
  - grass
  - bingmayong
  - Xi'an
  - url:http://www.devianta
  - rt.com/downl...
- See all
- Clear all · Turn off

More variations of the following image:



**littleredbook\_dot\_cn\_city ...**  
800 x 600 · 82 kB · jpeg  
Go to page: <http://www.littleredbook.cn/2009/02/01/xian-city-snapshot/>

| Title                                      | Source   | Resolution | File Size | File Type |
|--|--|------------|-----------|-----------|
| <a href="#">Bell Tower Photo, Bell ...</a> | <a href="http://www.chinahighlights.com">www.chinahighlights.com</a> | 800 x 602  | 74kB      | jpeg      |
| <a href="#">Bell Tower Photos</a>          | <a href="http://www.chinahighlights.com">www.chinahighlights.com</a> | 150 x 113  | 4kB       | jpeg      |
| <a href="#">Забележителнос ...</a>         | <a href="http://www.travelagent.bg">www.travelagent.bg</a>           | 130 x 100  | 12kB      | jpeg      |





## More Sizes

A good example of applying large-scale duplicate/near-duplicate detection on web-scale image data.

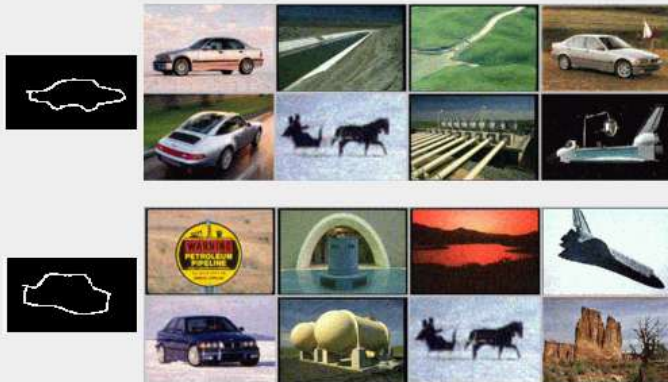
# Ex4: Image Search by Color Sketch

- Shipped in Bing in June 2010
  - Credit: Jingdong Wang, Xian-Sheng Hua, et al.

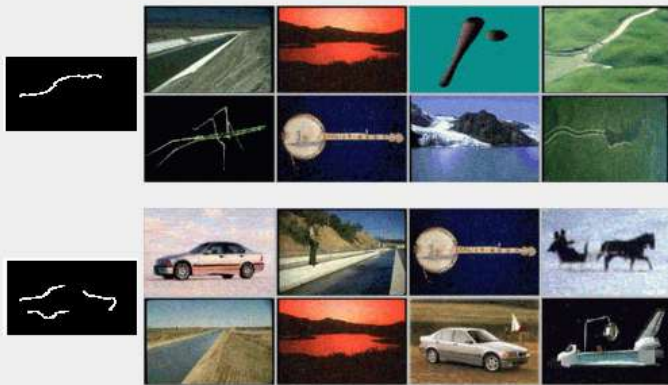
# Seems It Is Not New?

- “Query by sketch” has been proposed long time ago
  - But on small datasets and difficult to scale up
  - And seldom work well actually
  - Not use to use – “object sketch”

# Query by Sketch in Image Databases



The database used here consisted of 137 typical images drawn from the web. The geometric search engine was developed by Princeton University and Z. Lei, of our laboratory. We desire to find an image containing a car pointing at roughly 40 degrees with respect to the viewer of the image. This is a difficult shape for most people to draw, and is very difficult to draw for someone devoid of artistic skill. The idea is to proceed interactively with the database system, letting the system help the user in making an appropriate sketch. The user begins by sketching an easy shape, e.g., a side view of a car, the first Figure, and indexes into the database. The 8 highest ranking returns are shown: the 5th is a car pointing 60 degrees to 70 degrees with respect to the viewer. With that outline as a guide, the user modifies the outline into the sketch in the second Figure, which is the users attempt at sketching the desired shape. Upon indexing into the database again, The 5th image in the highest ranking 8 returned is an example of what is desired. This is an example of interacting with the database by letting the database help based on what is in the database rather than interaction by using a set of generic primitives for querying the database. Using generic primitives seems to be impractical if the database is generic containing a broad range of object types.



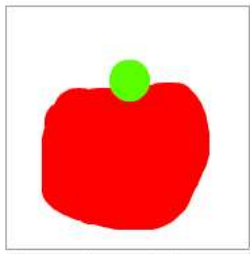
This figure, illustrates a different search concept for a car. An initial sketched curve fragment results in no useful return because it is insufficiently restrictive. A 2nd iteration involving the sketching of additional structure does result in some car hits among the 8 highest ranking returns.

Welcome in 2006!

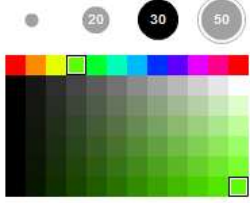
# retrievr

## All images

Search by:  
Sketch • [image](#)



Undo Redo Clear



**New!** Please help us rate sketches



From [sesame letterpress](#)



From [\[ CK \]](#)



From [Razberry](#)



From [roxycraft](#)



From [Pamela Machado](#)



From [G r e n](#)



From [Ferici](#)



From [Liesle](#)



From [Spamily](#)



From [ElisabethD](#)



From [Esther G](#)



From [elelour](#)



From [eye2eye](#)



From [shhexycorn](#)



From [eastofnorth's](#)



From [soulsin](#)

It is based on a SIGGRAPH 95's paper:  
C. Jacobs et al. Fast Multiresolution Image Querying. SIGGRAPH 1995  
on small scale image set and difficult to scale-up (0.44 second for 10,000 images)

copious amounts of feedback for some background, read here.

retrievr relies on parts of the System One platform.

From [call me kim](#)



# GazoPa<sub>β</sub>

GazoPa changes the way of image search.

New flower photo community



- Upload
- URL
- Draw
- Keyword
- Tools

Sign in is required to publish your drawing to Twitter etc.

color: #00FF00

Alpha:

Camera Clear

Undo Redo Upload

[Post to Twitter](#) [Post to Facebook](#) [Like](#) 813

### Sample images





# The website cannot display the page

HTTP 500

## Most likely causes:

- The website is under maintenance.
- The website has a programming error.

## What you can try:

- Refresh the page.
- Go back to the previous page.
- More information



# Our Approach

- Color sketch ...
  - Is not “object sketch”
  - But only rough color distribution
  - Supports large-scale data
  - And uses text at the same time

bing apple

Images Web Finance News Wikipedia Images Videos

RELATED SEARCHES

- Apple Logo
- Apple Pie
- Fiona Apple
- Apple Wallpaper
- Apple Tree
- Red Apple
- Green Apple
- Apple Store
- Apple Laptop
- Apple Macbook

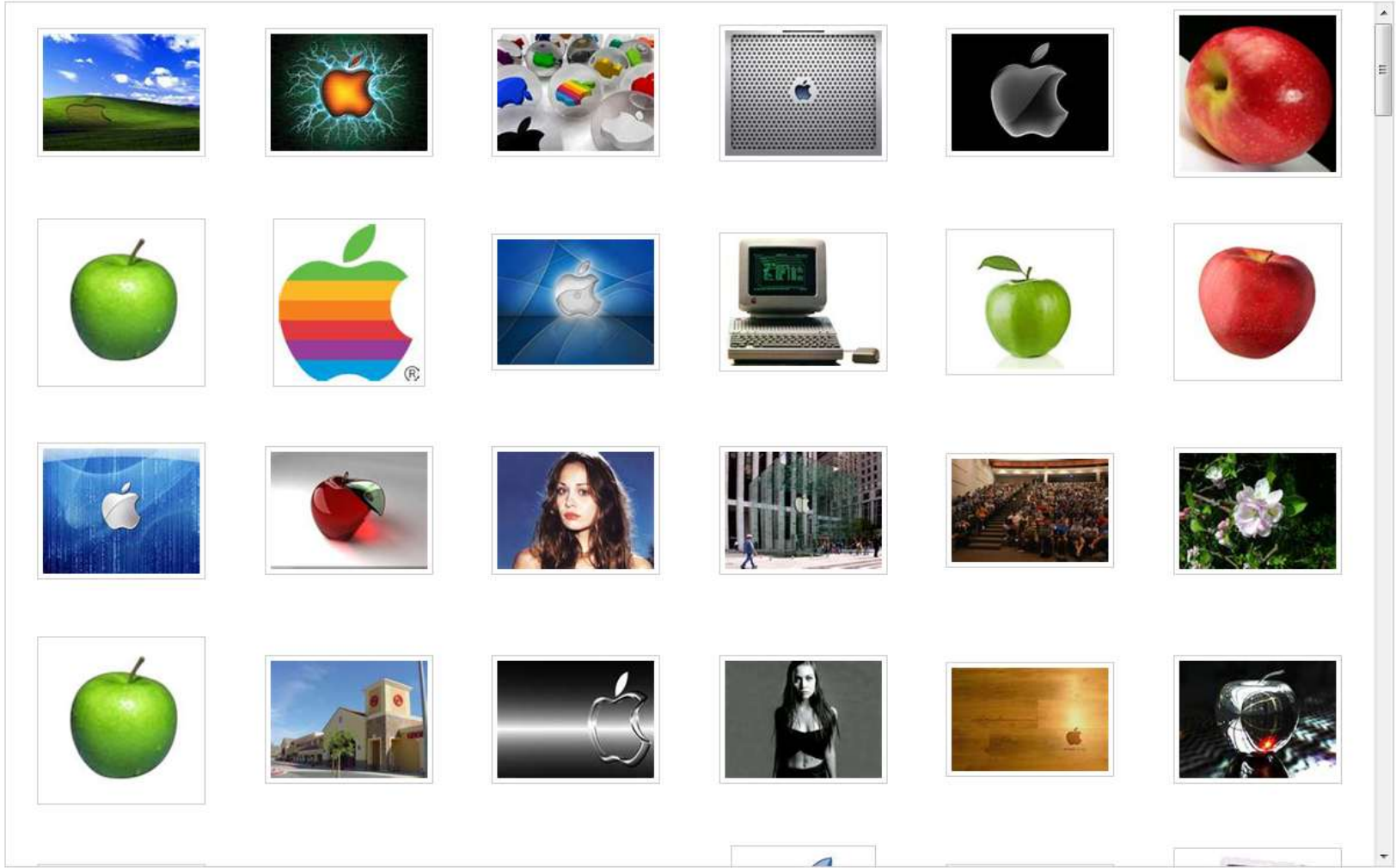
- SIZE
- LAYOUT
- COLOR
- STYLE
- PEOPLE

SEARCH HISTORY

- apple
- delft netherlands

See all Clear all - Turn off

IMAGES 1-30 of 8,260,000 results SafeSearch moderate Change





apple

Images Web Finance News Wikipedia Images Videos

RELATED SEARCHES

- Apple Logo
- Apple Pie
- Fiona Apple
- Apple Wallpaper
- Apple Tree
- Red Apple
- Green Apple
- Apple Store
- Apple Laptop
- Apple Macbook

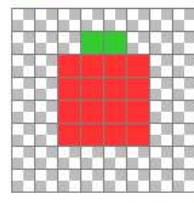
- SIZE
- LAYOUT
- COLOR
  - All
  - Full color
  - Black & white
  - Specific color
- STYLE
- PEOPLE

SEARCH HISTORY

apple

Specific color

Filter using sketch



Apply

IMAGES 1-48 of 995 results SafeSearch moderate Change

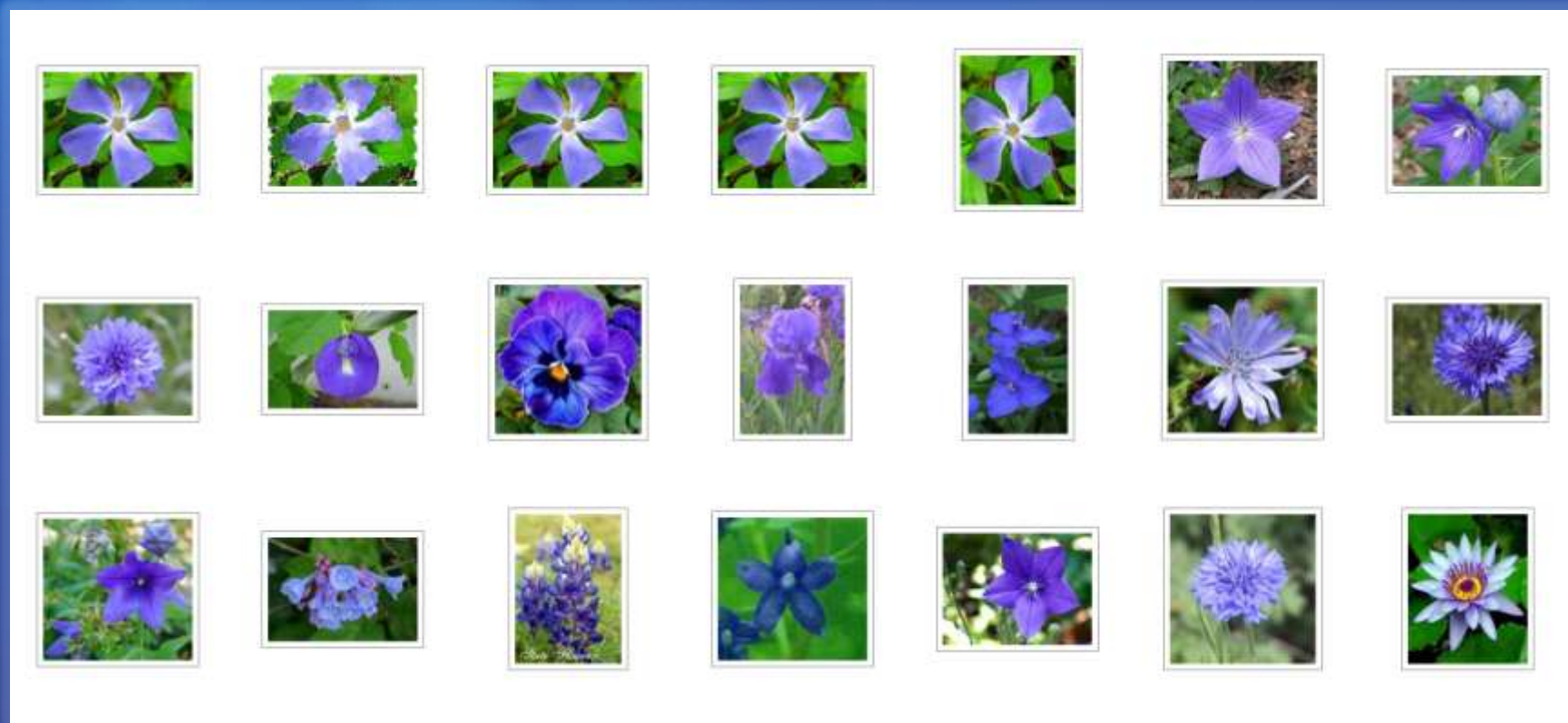


# Our Approach

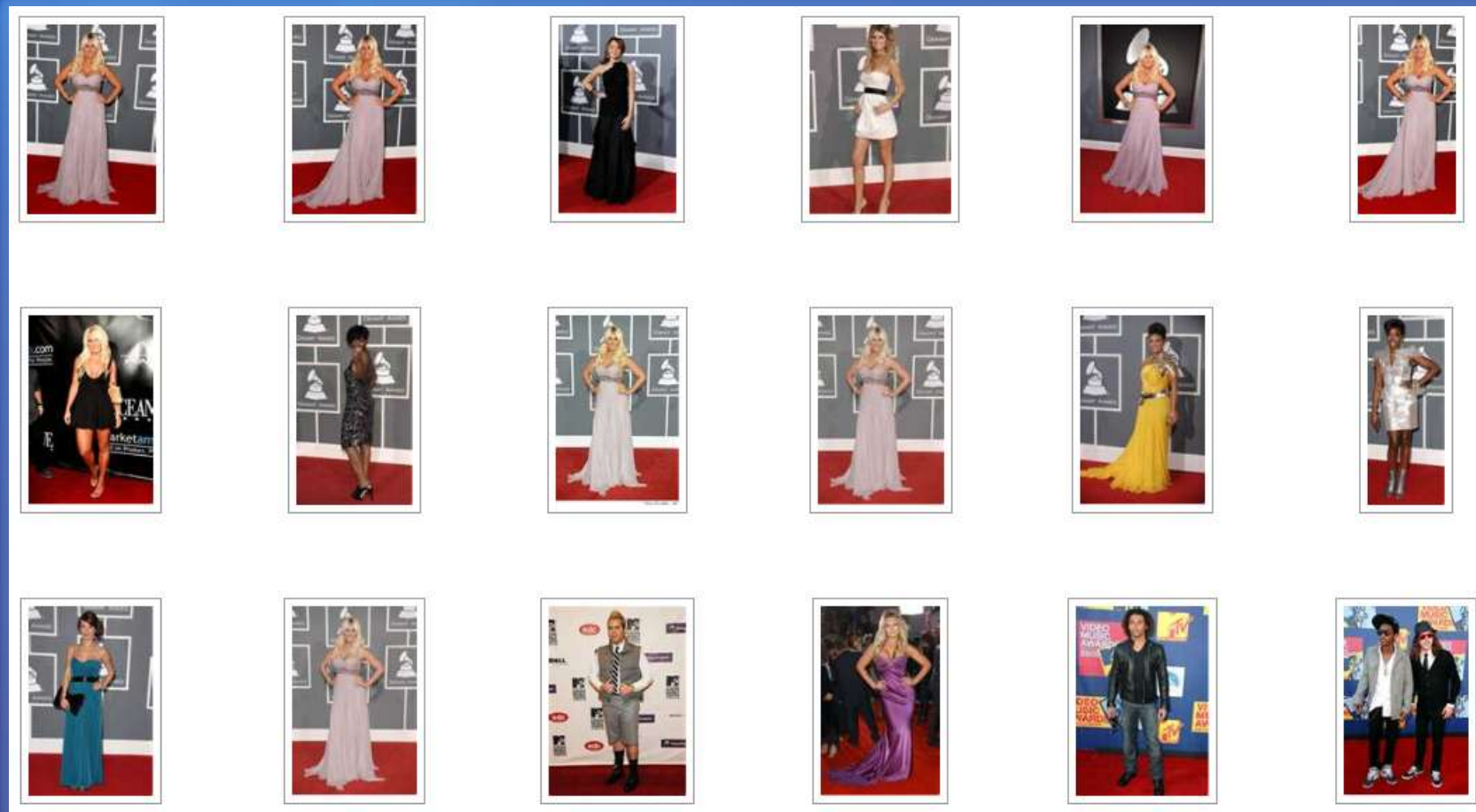
- Color sketch is not “object sketch”
  - But only rough color distribution
  - Supports large-scale data
  - And uses text at the same time
- Advantages of “Color Sketch”
  - More presentative than dominant color (and text only)
  - More robust than “object sketch”
  - Easy to use compared with “object sketch”
  - Easy to scale up



# Example: Blue flower with green leaf



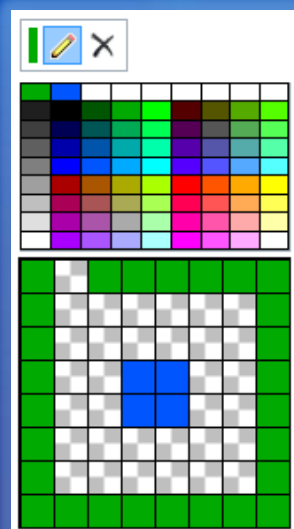
# Example: Brooke Hogan walking on red carpet



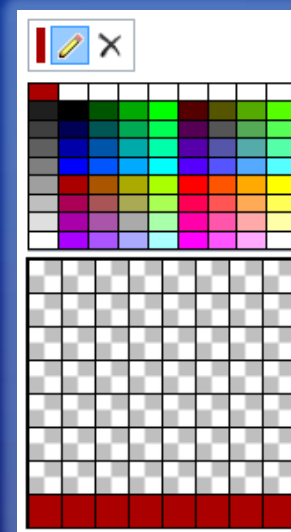


# Color Sketch Is More Powerful

Blue Flower with Green Leaf



Brooke Hogan walking on red carpet



# Color Sketch Is More Powerful



# The Techniques

- Color Sketch: Image Representation
  - Capturing both color and spatial information
  - Low computation and storage costs
- Intention Map: Intention Representation
  - Rough: Tolerance to the errors in the colors and positions of the strokes
  - Sparse: Intention estimation from sparse strokes
- Similarity Evaluation
  - Effective and fast



grass

ALL RESULTS  
Images of Grass

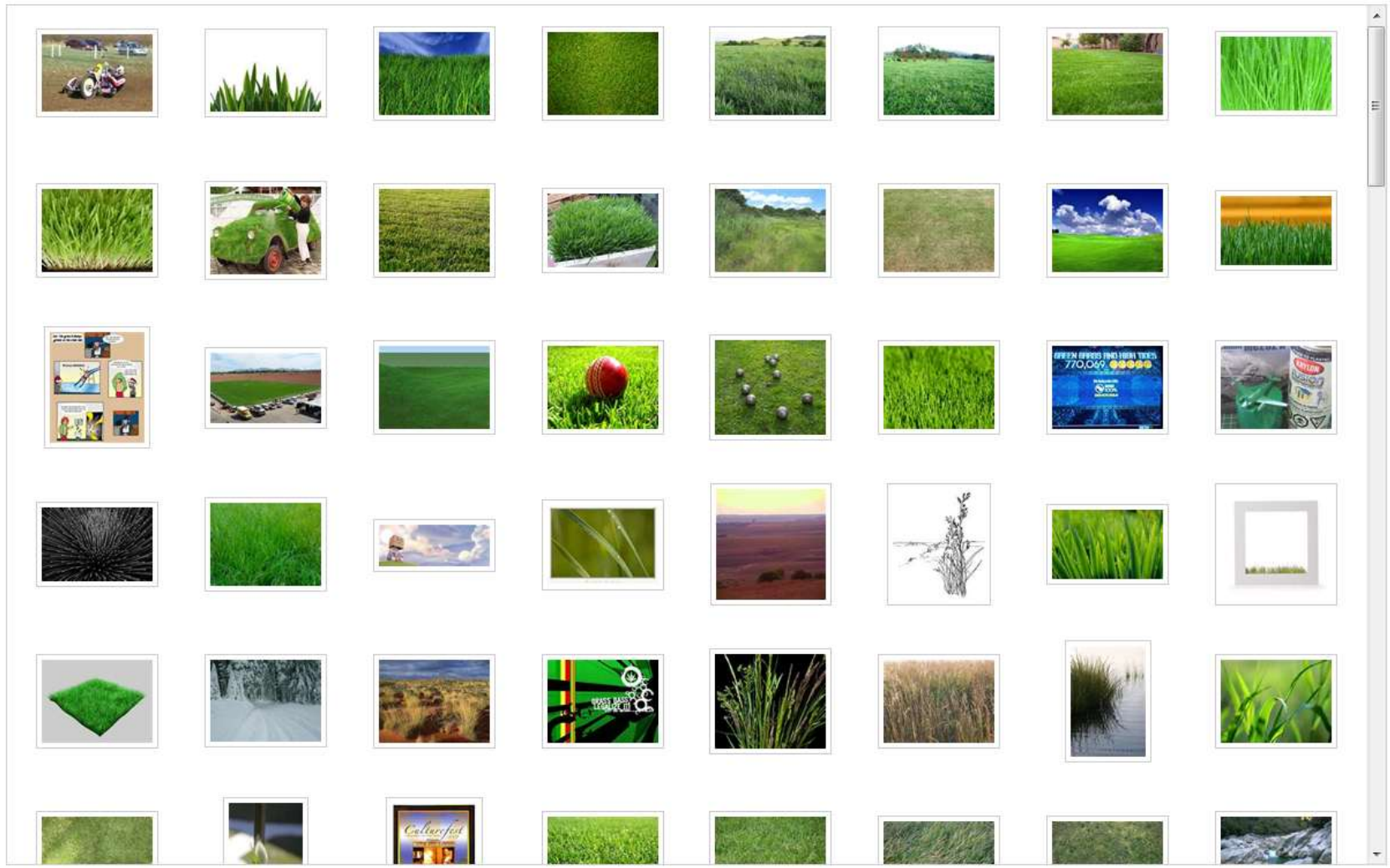
IMAGES 1-48 of 15,000,000 results SafeSearch moderate Change

- RELATED SEARCHES
- Green Grass
  - Bermuda Grass
  - Grass Field
  - Beach Grass
  - Lemon Grass
  - Tall Grass
  - Cotton Grass
  - Grass Carp
  - Mondo Grass
  - Grass Texture

- SIZE
- LAYOUT
- COLOR
- STYLE
- PEOPLE

- SEARCH HISTORY
- grass
  - flower
  - url:http://concordcritters.com/Phot...
  - url:http://emiliewood.com/photos/ju...
  - apple

See all  
Clear all · Turn off





ALL RESULTS

IMAGES 1-48 of 1,000 results SafeSearch moderate Change

Images of Grass

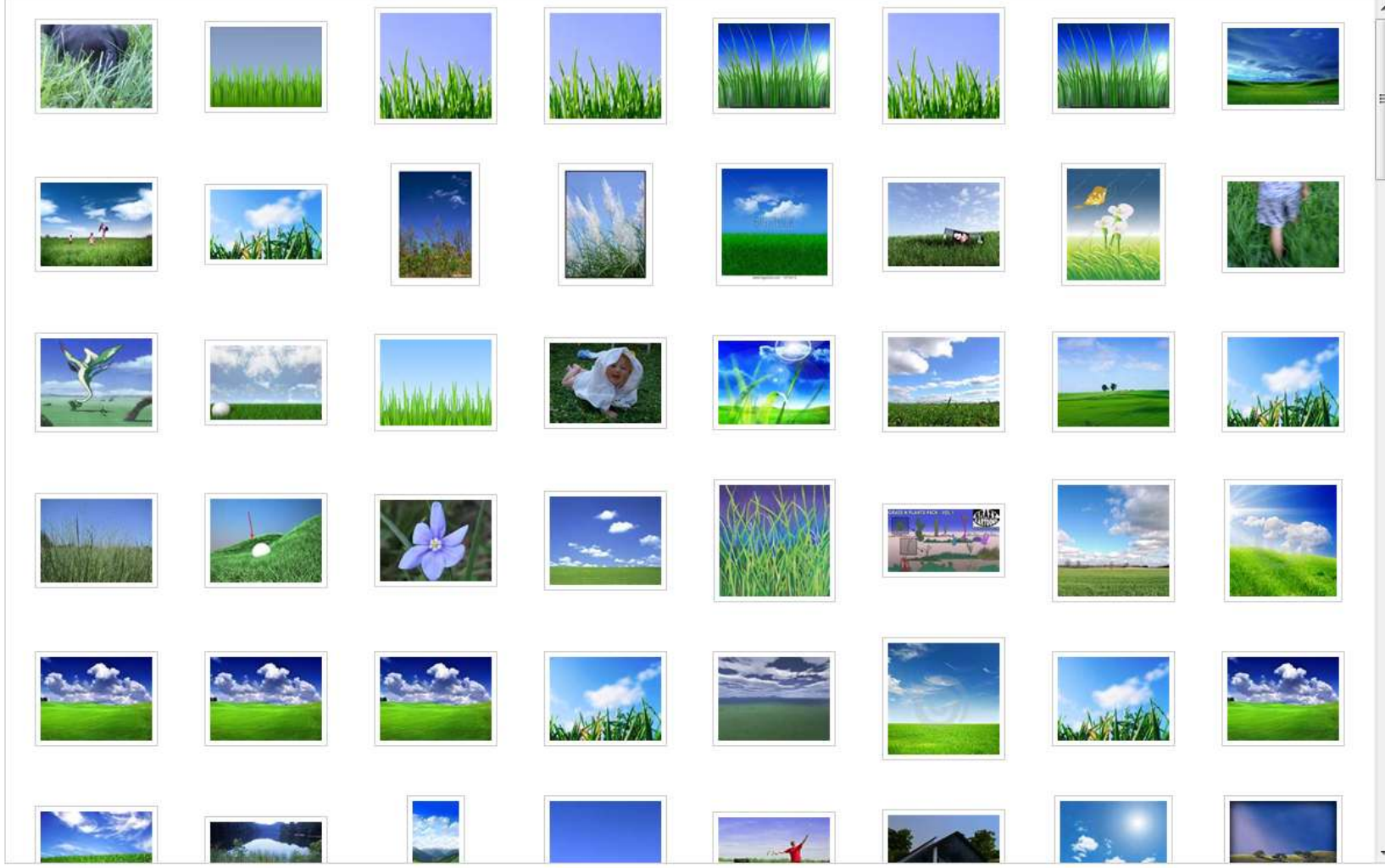
- RELATED SEARCHES
- Green Grass
  - Bermuda Grass
  - Grass Field
  - Beach Grass
  - Lemon Grass
  - Tall Grass
  - Cotton Grass
  - Grass Carp
  - Mondo Grass
  - Grass Texture

- SIZE
- LAYOUT
- COLOR
- All
  - Full color
  - Black & white

Specific color

Filter using sketch

Apply





ALL RESULTS

IMAGES 1-48 of 1,000 results SafeSearch moderate Change

Images of Grass

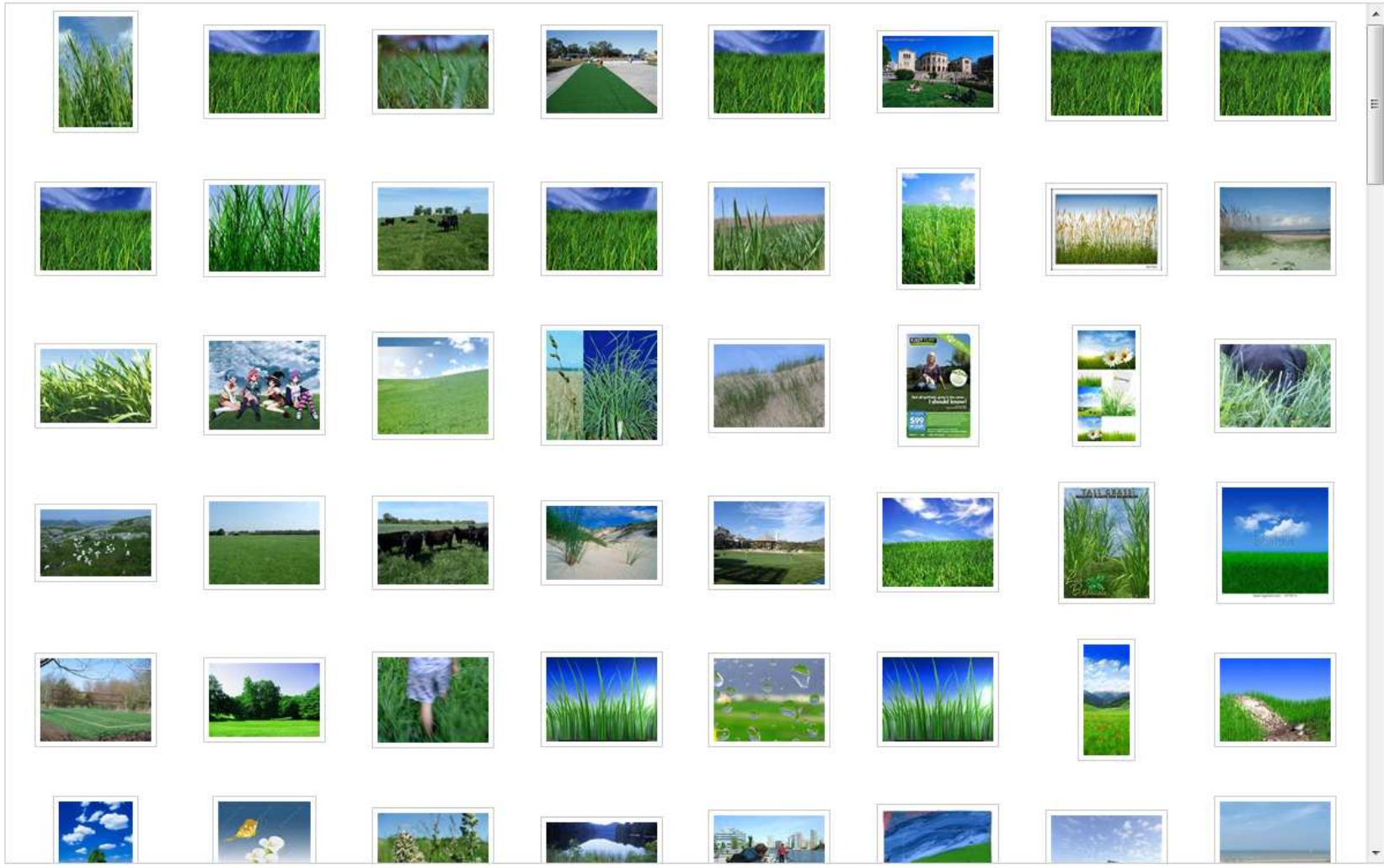
- RELATED SEARCHES
- Green Grass
  - Bermuda Grass
  - Grass Field
  - Beach Grass
  - Lemon Grass
  - Tall Grass
  - Cotton Grass
  - Grass Carp
  - Mondo Grass
  - Grass Texture

- SIZE
- LAYOUT
- COLOR
- All
  - Full color
  - Black & white

Specific color

Filter using sketch

Apply









grass

Make Bing your decision engine

ALL RESULTS

IMAGES 1-48 of 1,000 results SafeSearch moderate Change

Images of Grass

RELATED SEARCHES

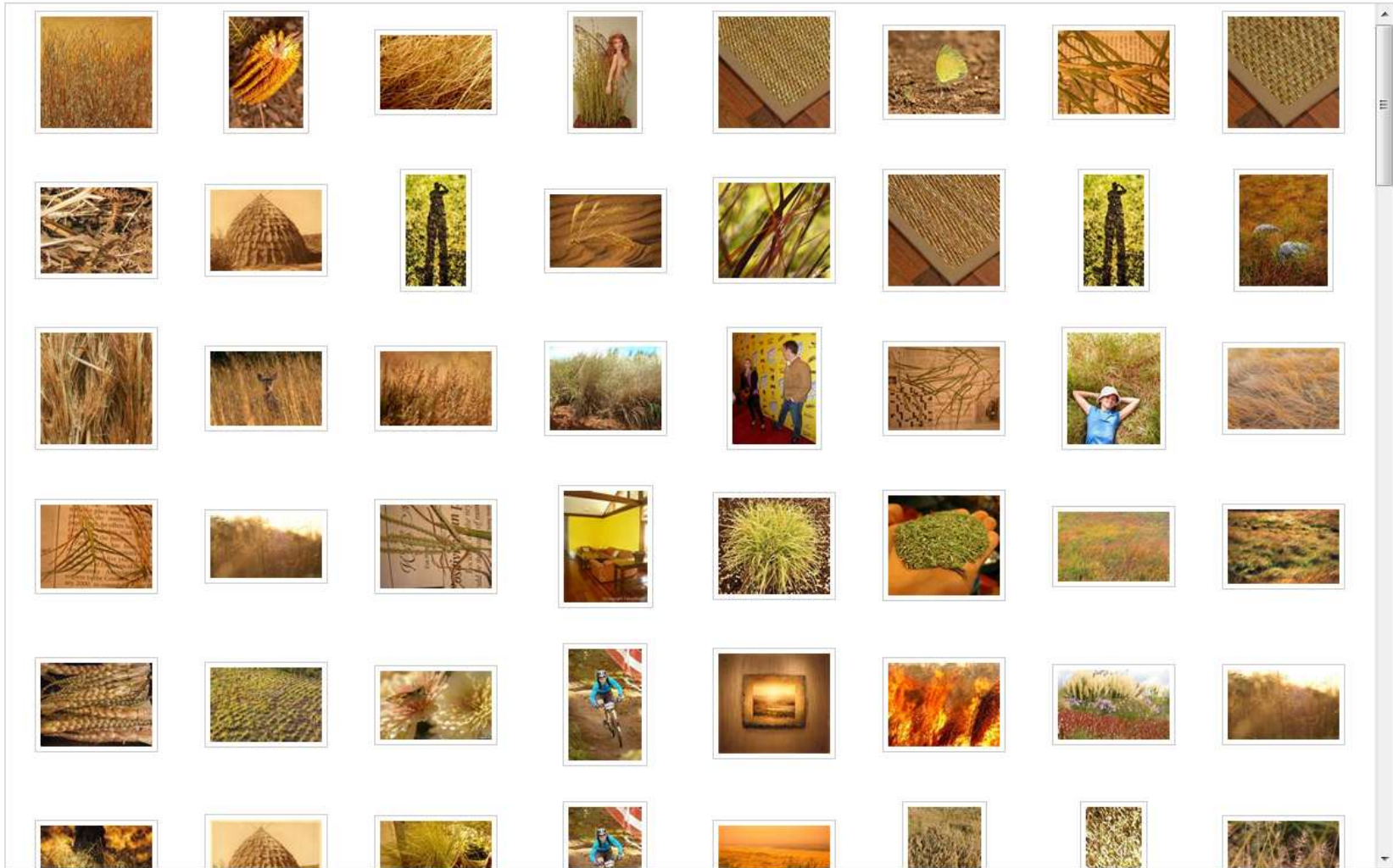
- Green Grass
- Bermuda Grass
- Grass Field
- Beach Grass
- Lemon Grass
- Tall Grass
- Cotton Grass
- Grass Carp
- Mondo Grass
- Grass Texture

- SIZE
- LAYOUT
- COLOR
  - All
  - Full color
  - Black & white

Specific color

Filter using sketch

Apply







ALL RESULTS

IMAGES 1-48 of 999 results SafeSearch moderate Change

Images of Grass

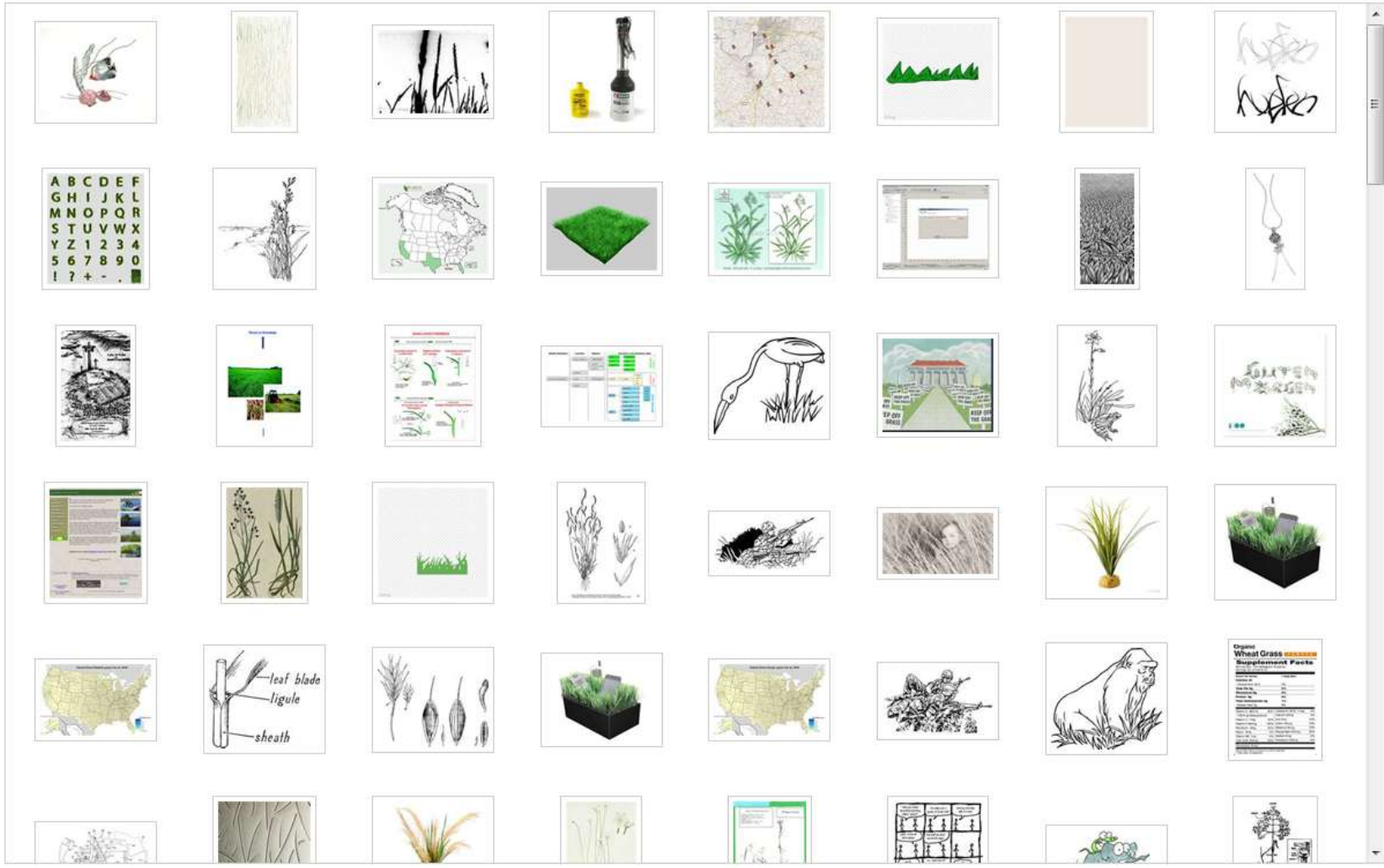
- RELATED SEARCHES
- Green Grass
- Bermuda Grass
- Grass Field
- Beach Grass
- Lemon Grass
- Tall Grass
- Cotton Grass
- Grass Carp
- Mondo Grass
- Grass Texture

- SIZE
- LAYOUT
- COLOR
- All
- Full color

Specific color

Filter using sketch

Apply





grass

Make Bing your decision engine

ALL RESULTS

IMAGES 1-48 of 60 results SafeSearch moderate Change

Images of Grass

RELATED SEARCHES

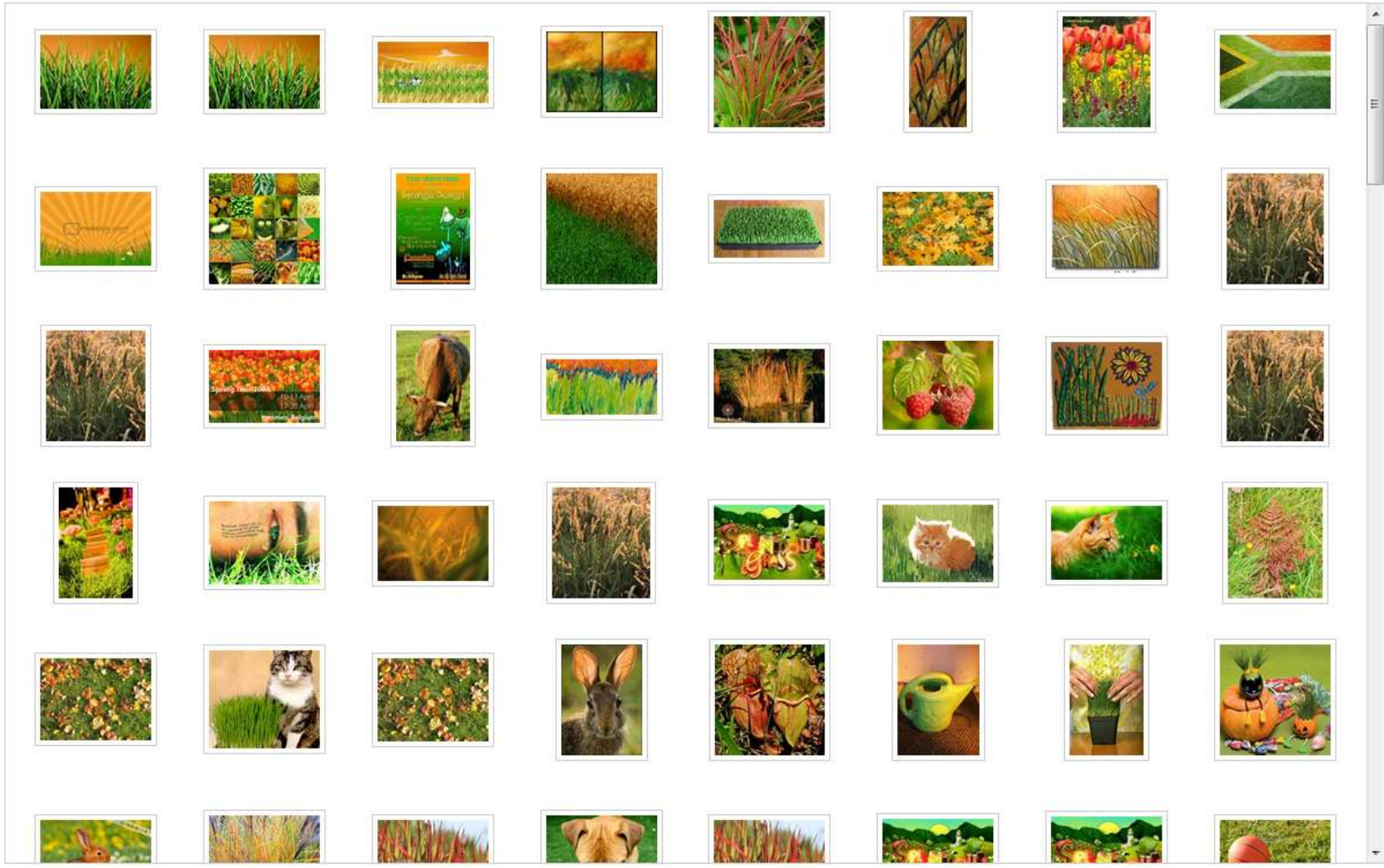
- Green Grass
- Bermuda Grass
- Grass Field
- Beach Grass
- Lemon Grass
- Tall Grass
- Cotton Grass
- Grass Carp
- Mondo Grass
- Grass Texture

- SIZE
- LAYOUT
- COLOR
  - All
  - Full color
  - Black & white

Specific color

Filter using sketch

Apply









flower

Make Bing your decision engine

- FLOWER
- Images of flower
- Types of Flowers
- Grow Flowers
- Arranging Flowers
- Send Flowers
- Flower Tips

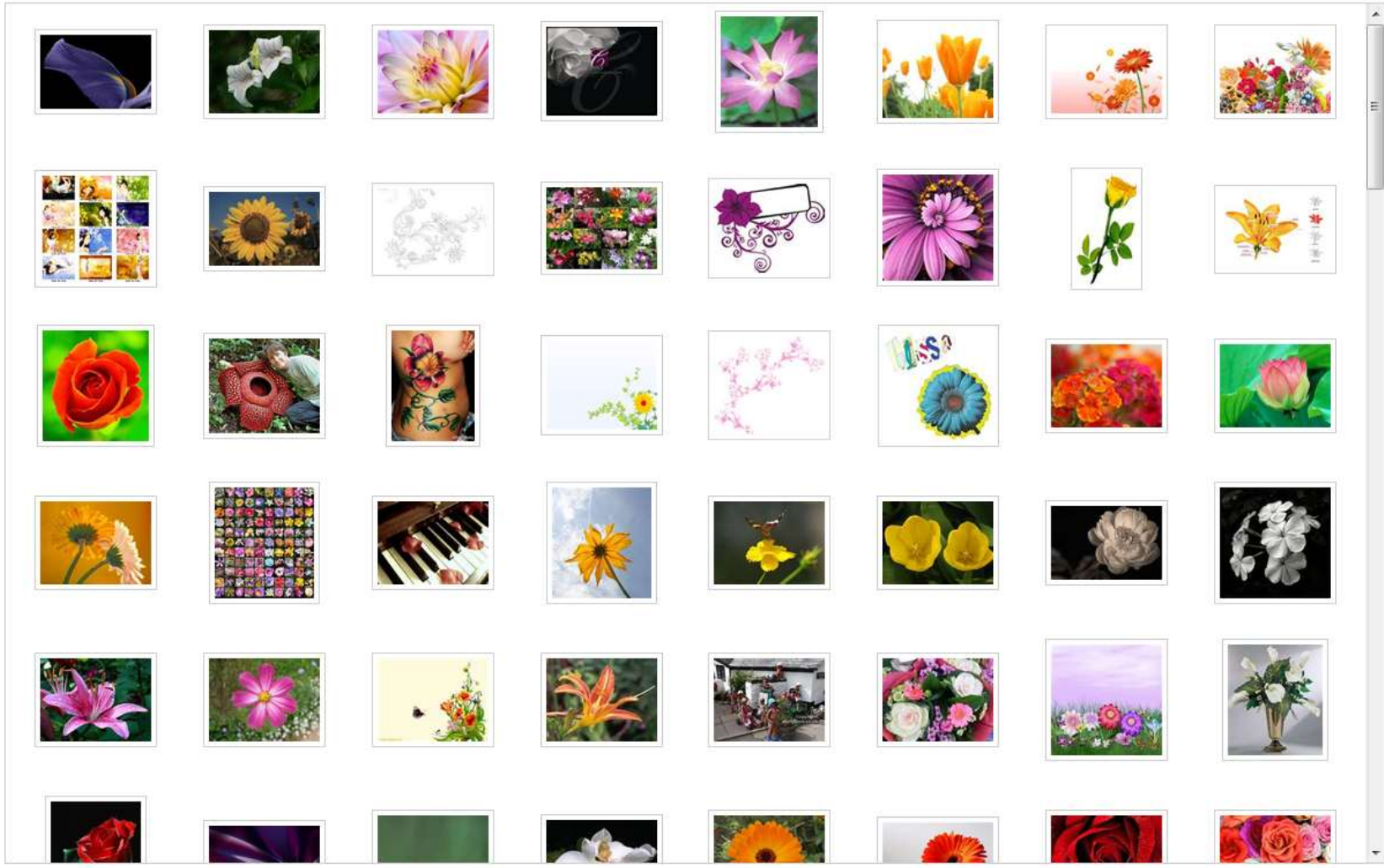
IMAGES 1-48 of 4,160,000 results SafeSearch moderate Change



- RELATED SEARCHES
- Lotus Flower
- Pink Flower
- Flower Power
- White Flower
- Passion Flower
- Blue Flower
- Flower Shop
- Orange Flower
- Purple Flower
- Flower Garden

- SIZE
- LAYOUT
- COLOR
- STYLE
- PEOPLE

- SEARCH HISTORY
- flower
- grass
- url:http://concordcritters.com/Phot...
- url:http://emiliewood.com/photos/fu...
- apple







- FLOWER
- Images of flower
- Types of Flowers
- Grow Flowers
- Arranging Flowers
- Send Flowers
- Flower Tips

- RELATED SEARCHES
- Lotus Flower
  - Pink Flower
  - Flower Power
  - White Flower
  - Passion Flower
  - Blue Flower
  - Flower Shop
  - Orange Flower
  - Purple Flower
  - Flower Garden

Specific color

Filter using sketch

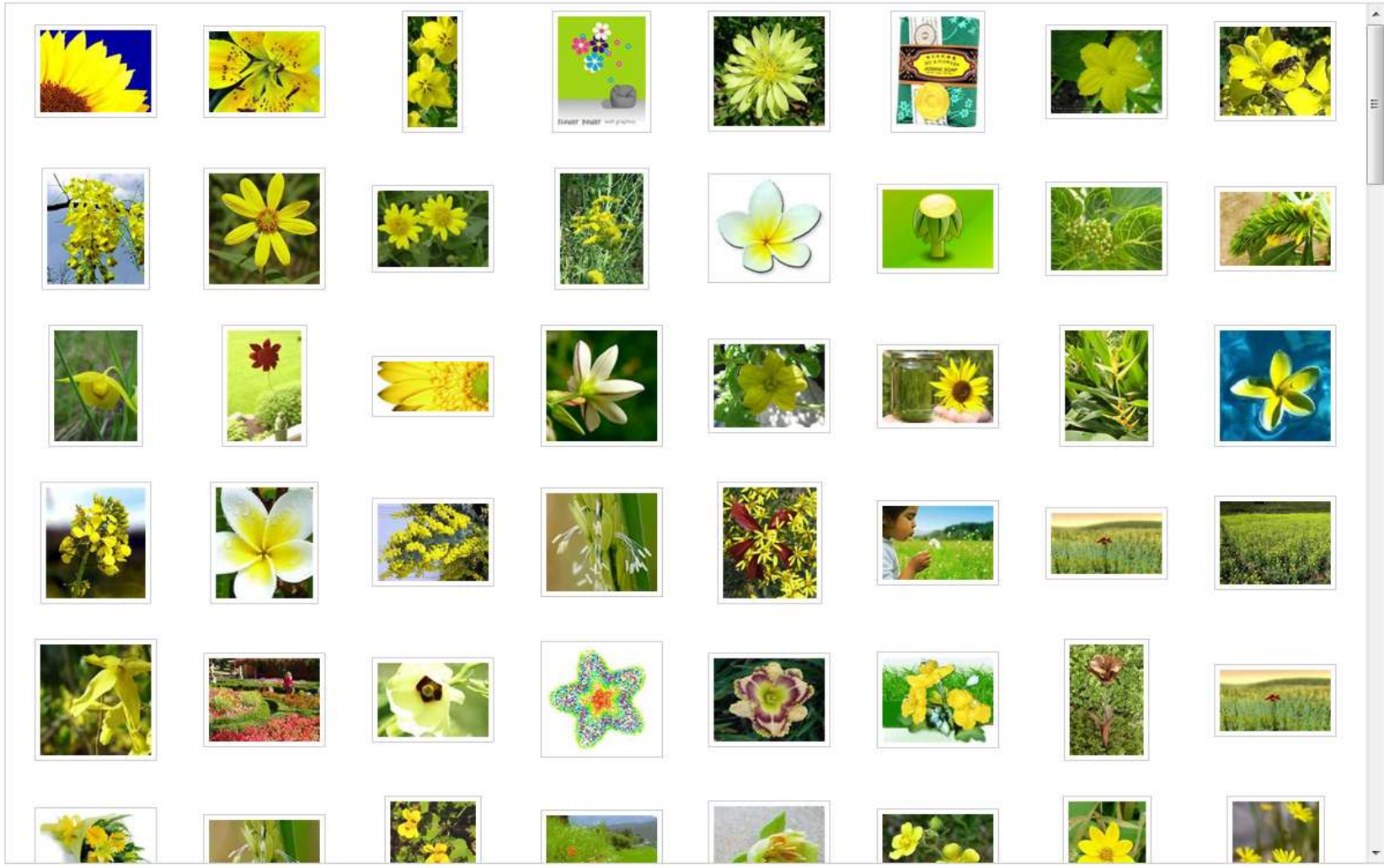
Color palette: Red, Orange, Yellow, Green, Blue, Purple, Pink, Light Green, Brown, Black, White

Sketch tools: Pencil, Eraser, Refresh

Sketch grid with yellow selection

Apply

IMAGES 1-48 of 995 results SafeSearch moderate Change





- FLOWER
- Images of flower
- Types of Flowers
- Grow Flowers
- Arranging Flowers
- Send Flowers
- Flower Tips

IMAGES 1-48 of 998 results SafeSearch moderate Change



- RELATED SEARCHES
- Lotus Flower
  - Pink Flower
  - Flower Power
  - White Flower
  - Passion Flower
  - Blue Flower
  - Flower Shop
  - Orange Flower
  - Purple Flower
  - Flower Garden

Specific color

Filter using sketch

Apply



flower

Make Bing your decision engine

FLOWER

IMAGES 1-48 of 998 results SafeSearch moderate Change

Images of flower

- Types of Flowers
- Grow Flowers
- Arranging Flowers
- Send Flowers
- Flower Tips

RELATED SEARCHES

- Lotus Flower
- Pink Flower
- Flower Power
- White Flower
- Passion Flower
- Blue Flower
- Flower Shop
- Orange Flower
- Purple Flower
- Flower Garden

Specific color

Filter using sketch

Color palette: Red, Orange, Yellow, Green, Cyan, Blue, Purple, Pink, Light Green, Brown, Black, White

Tools: Eraser, Pencil, Fill, Refresh

Apply





- FLOWER
- Images of flower
- Types of Flowers
- Grow Flowers
- Arranging Flowers
- Send Flowers
- Flower Tips

IMAGES 1-48 of 996 results SafeSearch moderate Change

- RELATED SEARCHES
- Lotus Flower
  - Pink Flower
  - Flower Power
  - White Flower
  - Passion Flower
  - Blue Flower
  - Flower Shop
  - Orange Flower
  - Purple Flower
  - Flower Garden

Specific color

Filter using sketch

Apply









ALL RESULTS

IMAGES 1-48 of 1,000 results

Images of Flag

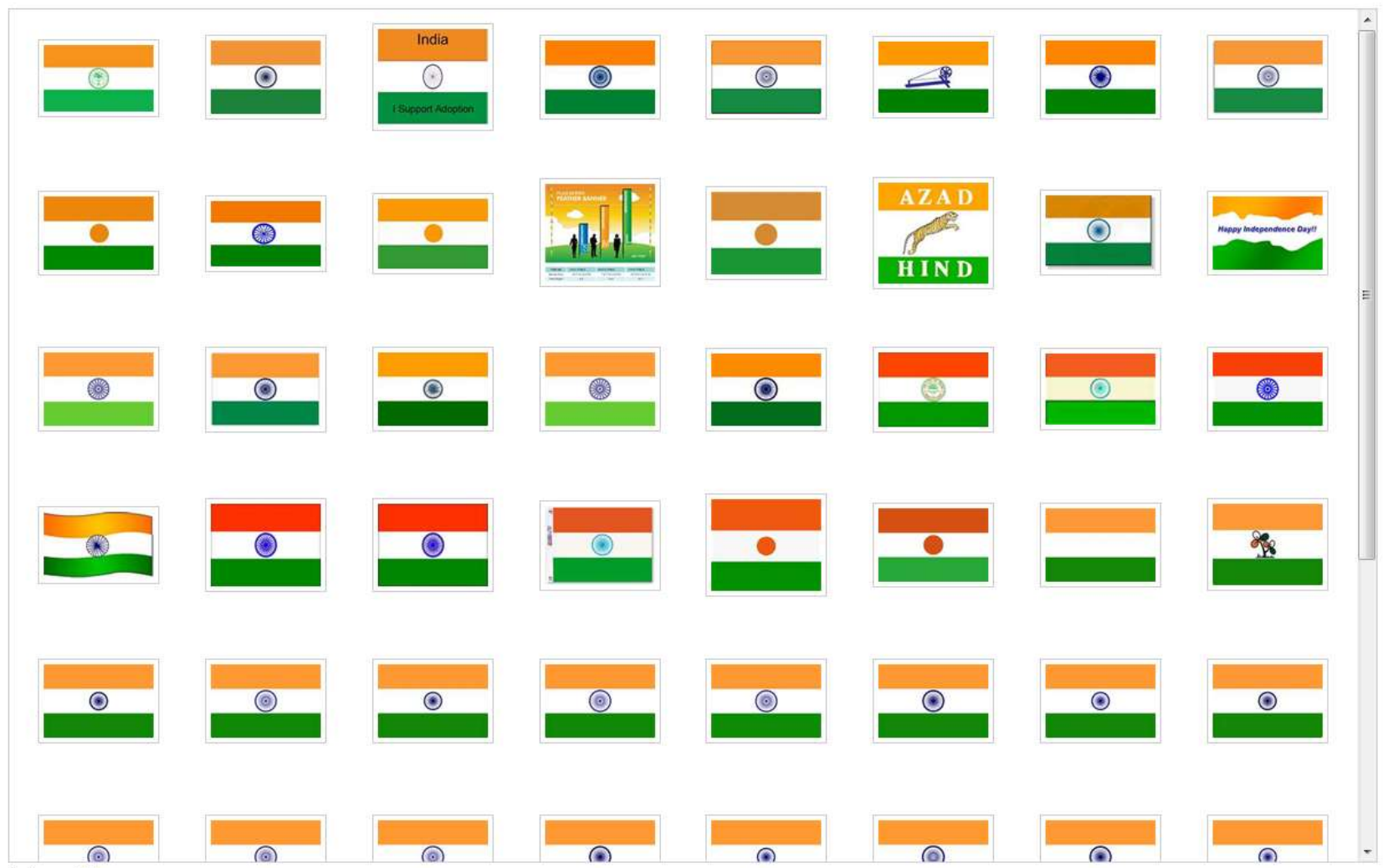
- RELATED SEARCHES
- American Flag
  - Mexican Flag
  - Mexico Flag
  - French Flag
  - Canada Flag
  - Anti Flag
  - Usa Flag
  - India Flag
  - Texas Flag
  - Italy Flag

- SIZE
- LAYOUT
- COLOR
- All
  - Full color
  - Black & white

Specific color

Filter using sketch

Apply



转到 Bing 中国





flag

Make Bing your decision engine

ALL RESULTS

IMAGES 1-48 of 1,000 results

Images of Flag

RELATED SEARCHES

- American Flag
- Mexican Flag
- Mexico Flag
- French Flag
- Canada Flag
- Anti Flag
- Usa Flag
- India Flag
- Texas Flag
- Italy Flag

- SIZE
- LAYOUT
- COLOR
  - All
  - Full color
  - Black & white

Specific color

Filter using sketch

Color palette with 24 color swatches and a sketch tool.



转到 Bing 中国

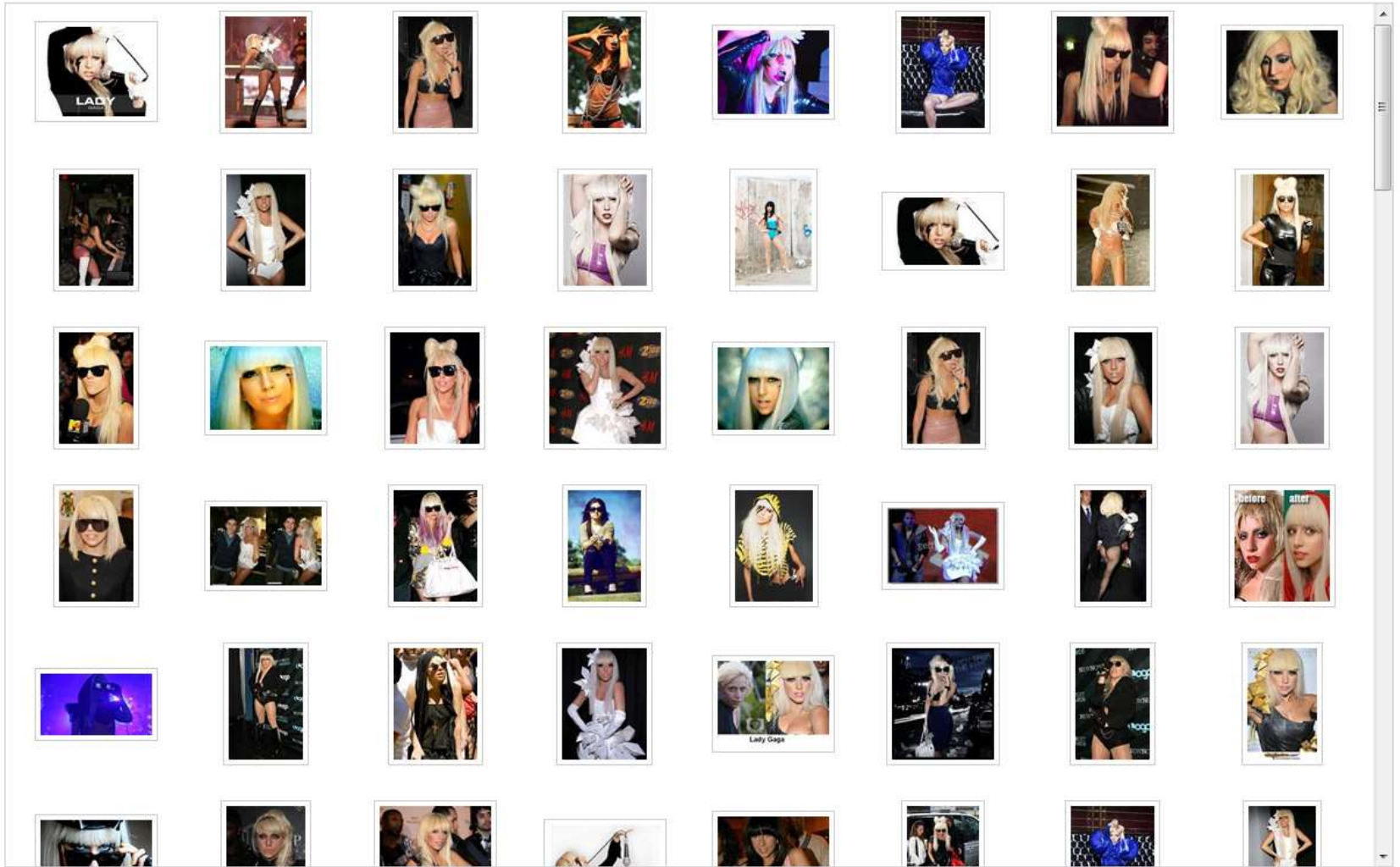




Lady Gaga

- ALL RESULTS
- Images of Lady Gaga
- Events
- News about Lady Gaga
- Videos of Lady Gaga

IMAGES 1-48 of 1,480,000 results



- RELATED PEOPLE
- Colby O'Donis
  - Katy Perry
  - Britney Spears
  - Rihanna
  - Lady Starlight
  - Elise Estrada
  - Madonna
  - Paris Hilton
  - Akon
  - Leona Lewis

- SIZE
- LAYOUT
- COLOR
- STYLE
- PEOPLE

- SEARCH HISTORY
- Lady Gaga
  - flag
  - BMW
  - flag filterui:color-cls\_GREEN...
  - url:http://www.travelchinaguide.com...

转到 Bing 中国



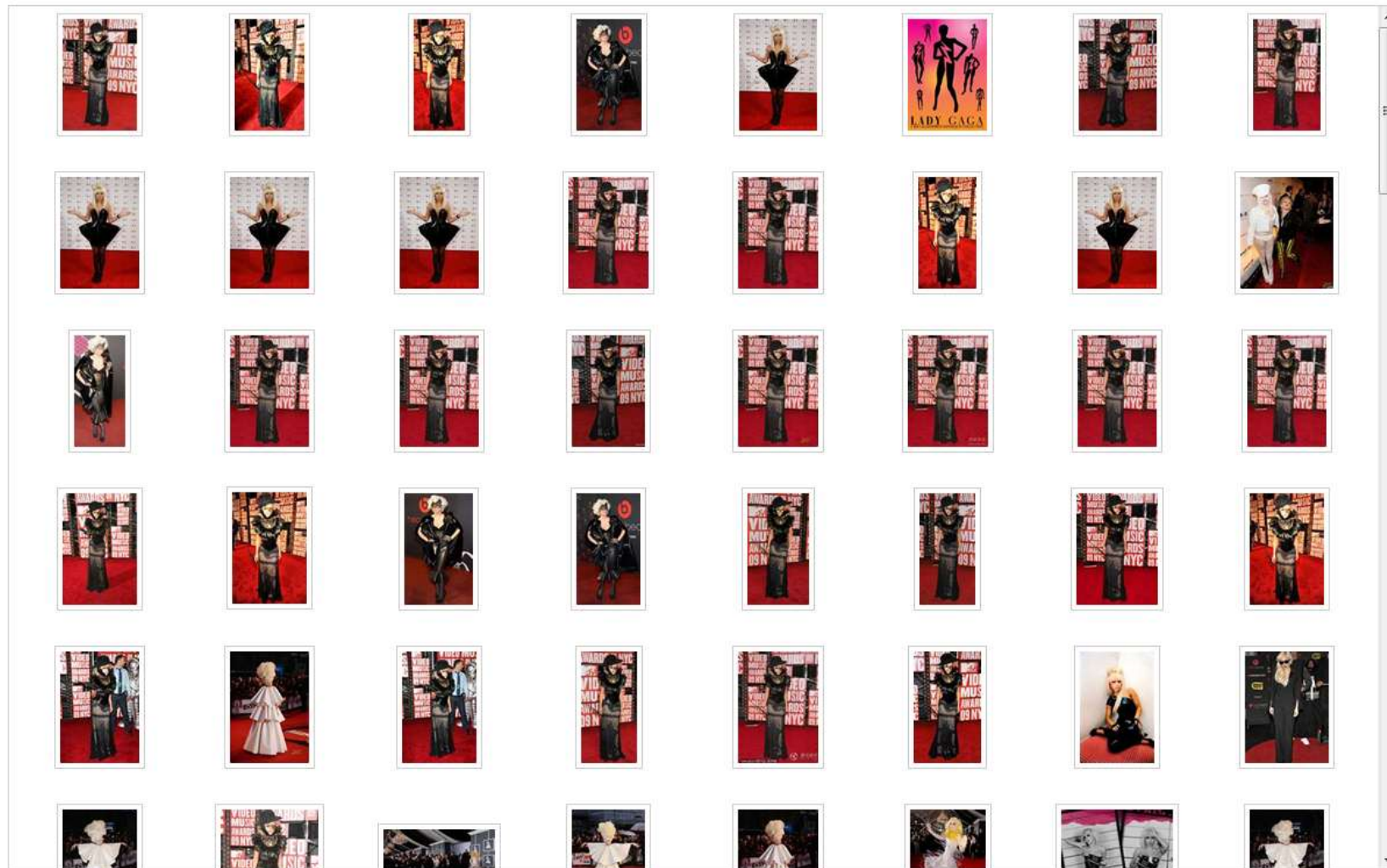




lady gaga

- ALL RESULTS
- Images of Lady Gaga
- Events
- News about Lady Gaga
- Videos of Lady Gaga

IMAGES 1-48 of 998 results



- RELATED PEOPLE
- Colby O'Donis
  - Katy Perry
  - Britney Spears
  - Rihanna
  - Lady Starlight
  - Elise Estrada
  - Madonna
  - Paris Hilton
  - Akon
  - Leona Lewis

SIZE

Specific color

Filter using sketch

Color selection palette with a sketch grid below it.

Apply





lady gaga

- ALL RESULTS
- Images of Lady Gaga
- Events
- News about Lady Gaga
- Videos of Lady Gaga

IMAGES 1-48 of 998 results

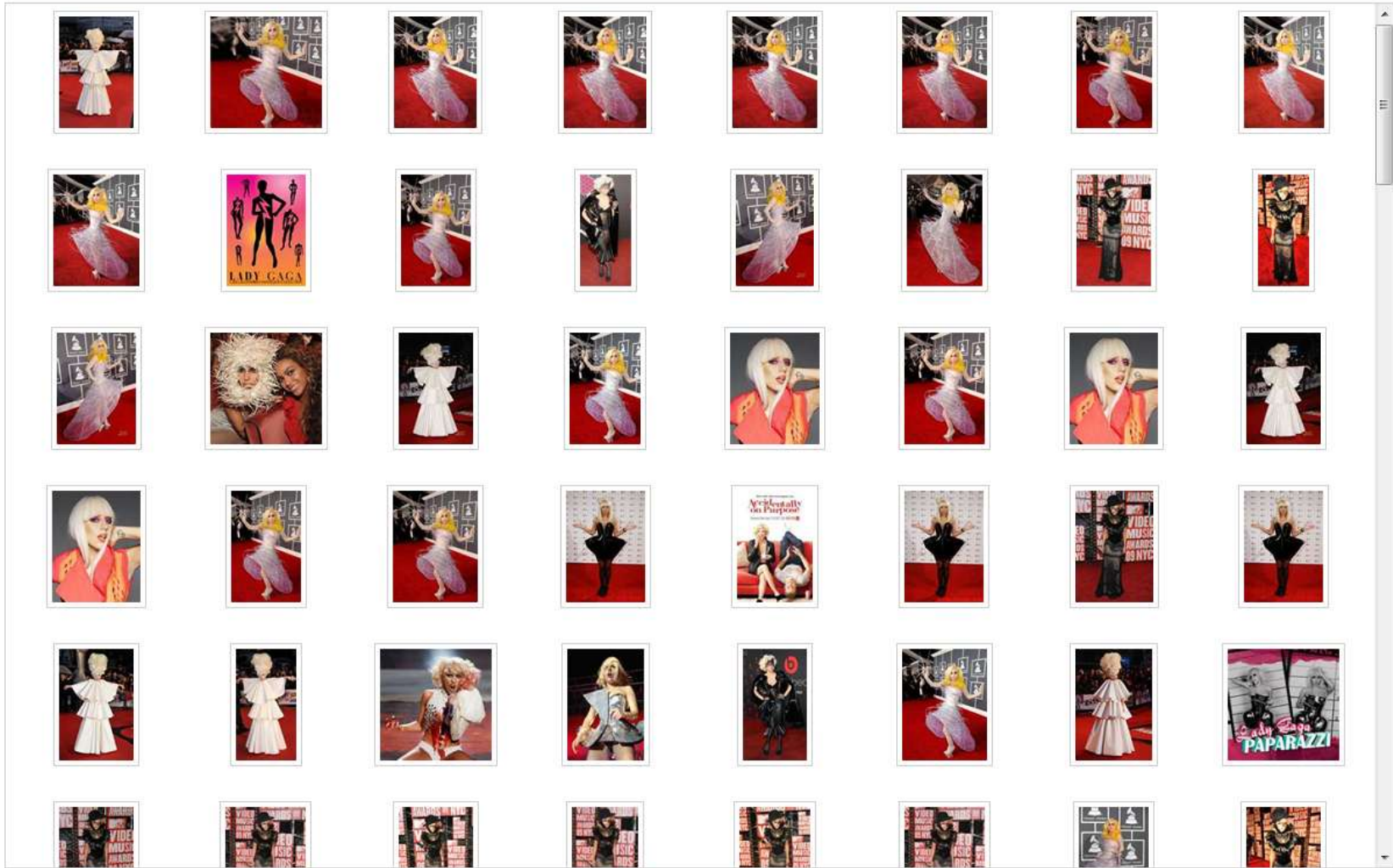
- RELATED PEOPLE
- Colby O'Donis
  - Katy Perry
  - Britney Spears
  - Rihanna
  - Lady Starlight
  - Elise Estrada
  - Madonna
  - Paris Hilton
  - Akon
  - Leona Lewis

SIZE

Specific color

Filter using sketch

Apply



转到 Bing 中国





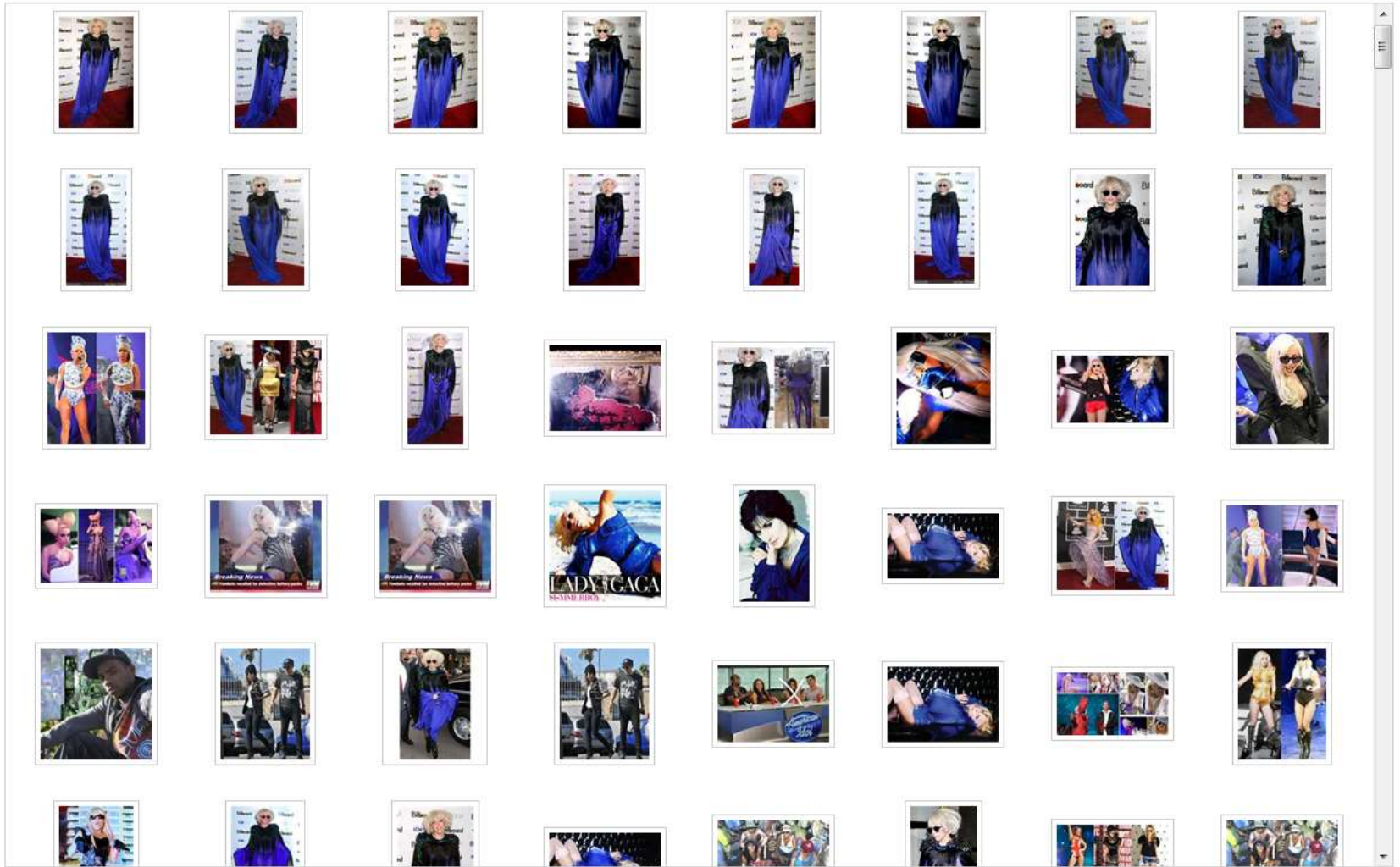


lady gaga

Make Bing your decision engine

- ALL RESULTS
- Images of Lady Gaga
- Events
- News about Lady Gaga
- Videos of Lady Gaga

IMAGES 1-48 of 60 results



- RELATED PEOPLE
- Colby O'Donis
  - Katy Perry
  - Britney Spears
  - Rihanna
  - Lady Starlight
  - Elise Estrada
  - Madonna
  - Paris Hilton
  - Akon
  - Leona Lewis

SIZE

Specific color

Filter using sketch

Apply

转到 Bing 中国



lady gaga

- ALL RESULTS
- Images of Lady Gaga
- Events
- News about Lady Gaga
- Videos of Lady Gaga

IMAGES 1-48 of 993 results

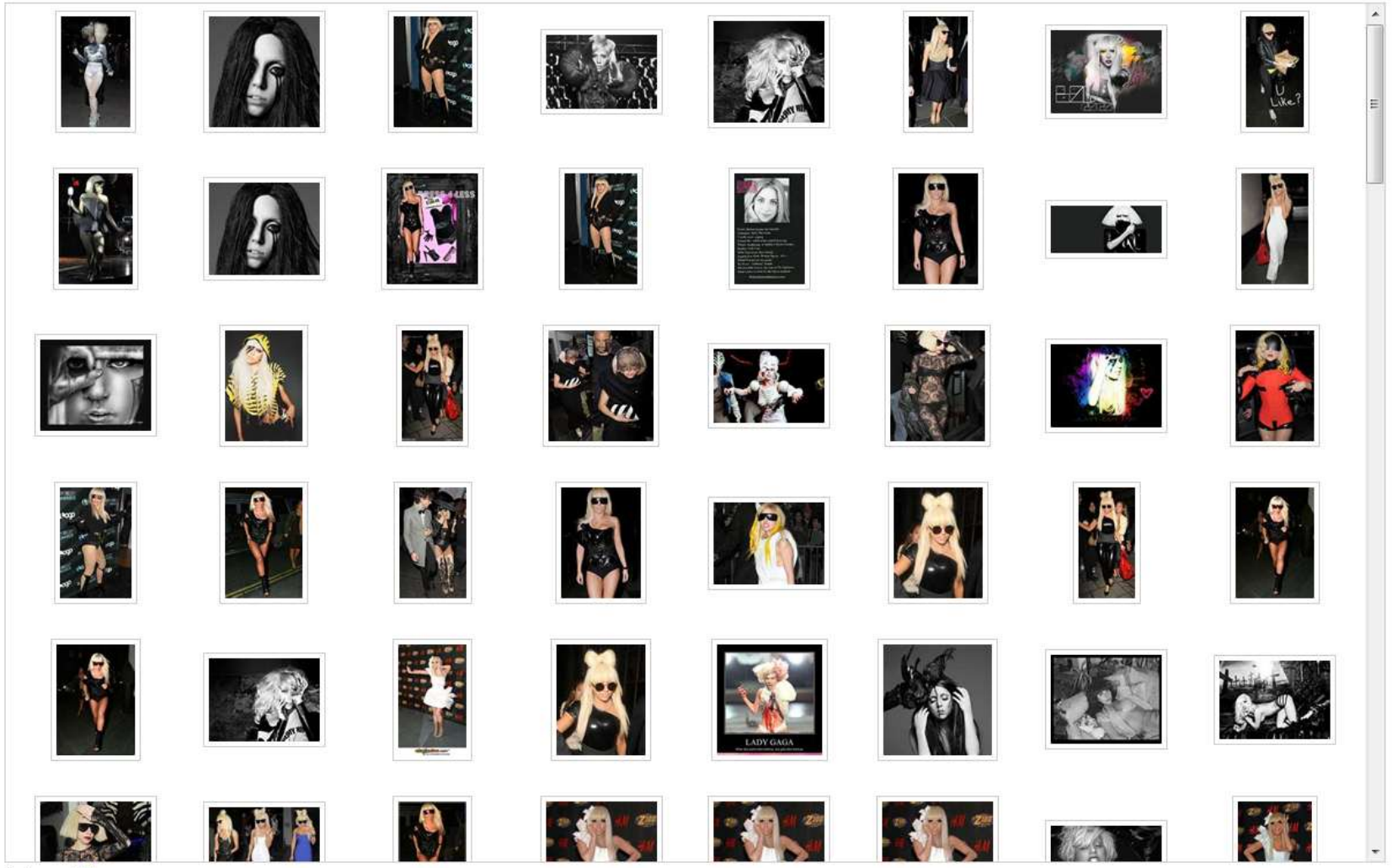
- RELATED PEOPLE
- Colby O'Donis
  - Katy Perry
  - Britney Spears
  - Rihanna
  - Lady Starlight
  - Elise Estrada
  - Madonna
  - Paris Hilton
  - Akon
  - Leona Lewis

SIZE

Specific color

Filter using sketch

Apply

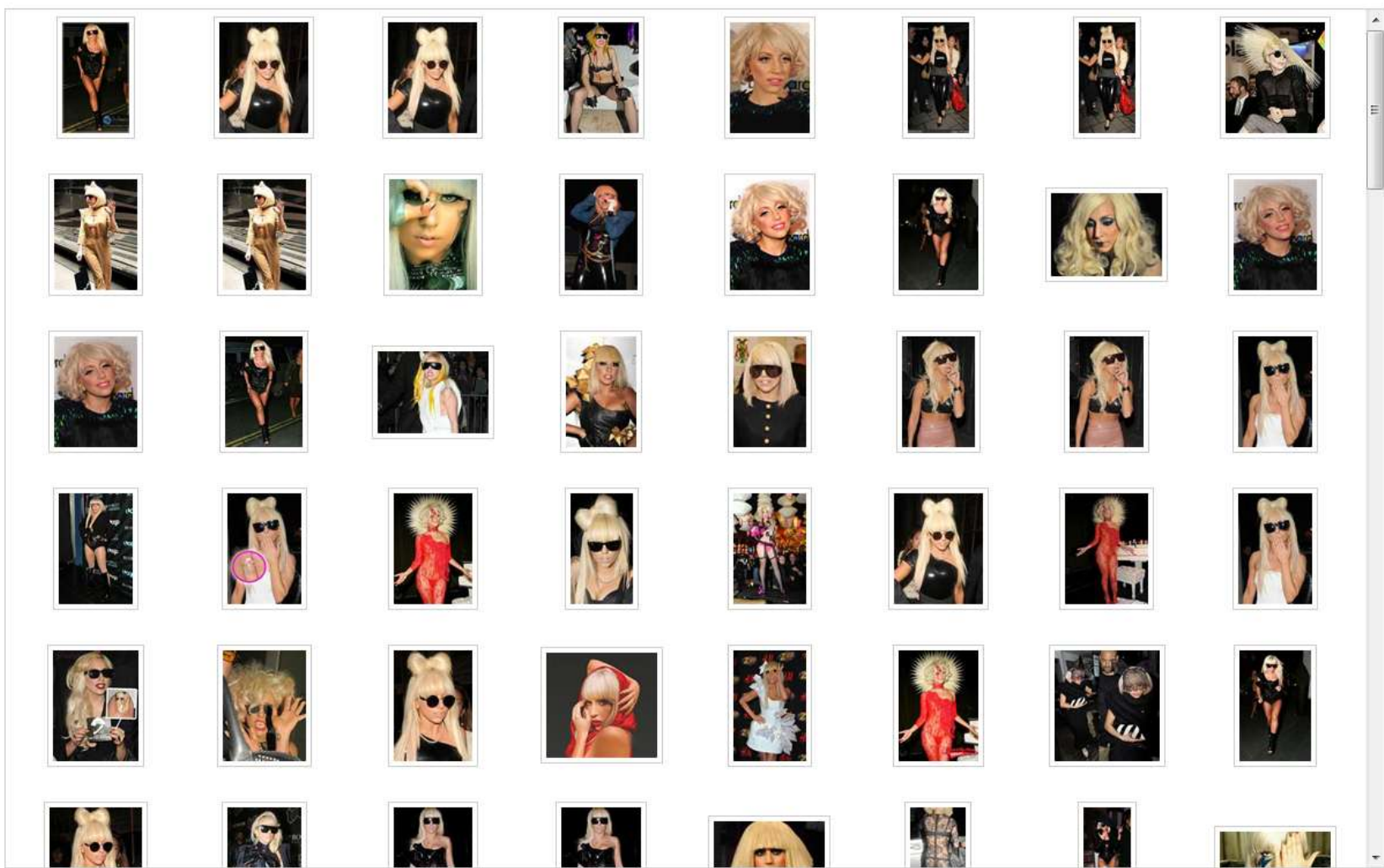


转到 Bing 中国



- ALL RESULTS
- Images of Lady Gaga
- Events
- News about Lady Gaga
- Videos of Lady Gaga

IMAGES 1-48 of 993 results



- RELATED PEOPLE
- Colby O'Donis
  - Katy Perry
  - Britney Spears
  - Rihanna
  - Lady Starlight
  - Elise Estrada
  - Madonna
  - Paris Hilton
  - Akon
  - Leona Lewis

SIZE

Specific color

Filter using sketch

Apply

转到 Bing 中国



lady gaga

- ALL RESULTS
- Images of Lady Gaga
- Events
- News about Lady Gaga
- Videos of Lady Gaga

IMAGES 1-48 of 999 results

- RELATED PEOPLE
- Colby O'Donis
  - Katy Perry
  - Britney Spears
  - Rihanna
  - Lady Starlight
  - Elise Estrada
  - Madonna
  - Paris Hilton
  - Akon
  - Leona Lewis

SIZE

Specific color

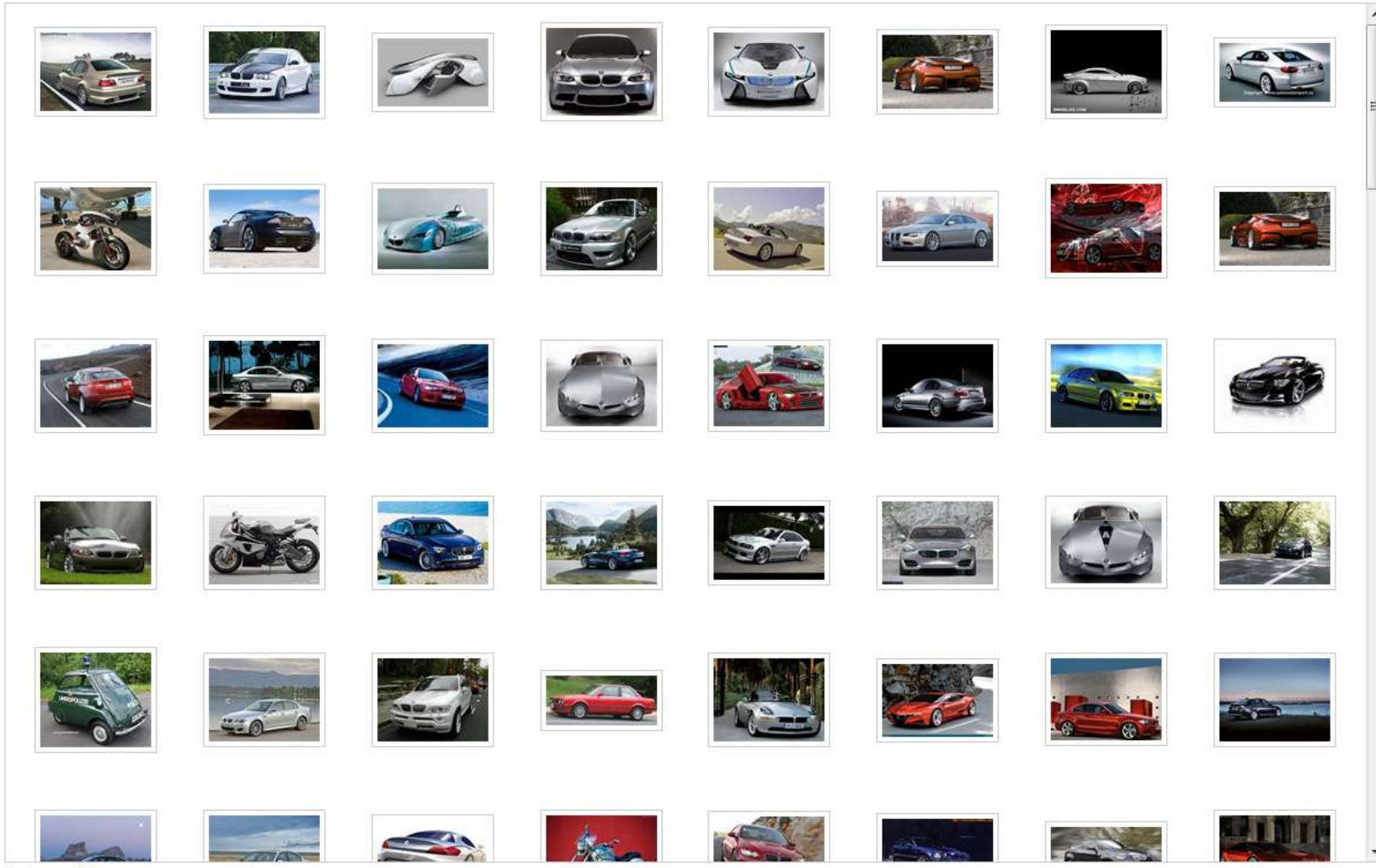
Filter using sketch





- BMW
- Images of BMW**
- BMW Cars
- BMW Dealers
- Used BMW
- BMW Parts
- BMW Accessories

IMAGES 1-48 of 1,780,000 results



- RELATED SEARCHES
- Bmw M3
  - Bmw X6
  - Bmw X5
  - Bmw M6
  - Bmw Front
  - Bmw Logo
  - Bmw Tuning
  - Bmw Rear View
  - Bmw Isetta
  - Bmw Gina
- ⊕ SIZE
- ⊕ LAYOUT
- ⊕ COLOR
- ⊕ STYLE
- ⊕ PEOPLE
- SEARCH HISTORY
- BMW
  - lady gaga
  - flag
  - flag filterui:color-cls\_GREEN...
  - url:http://www.travelchinaguide.com...

转到 Bing 中国







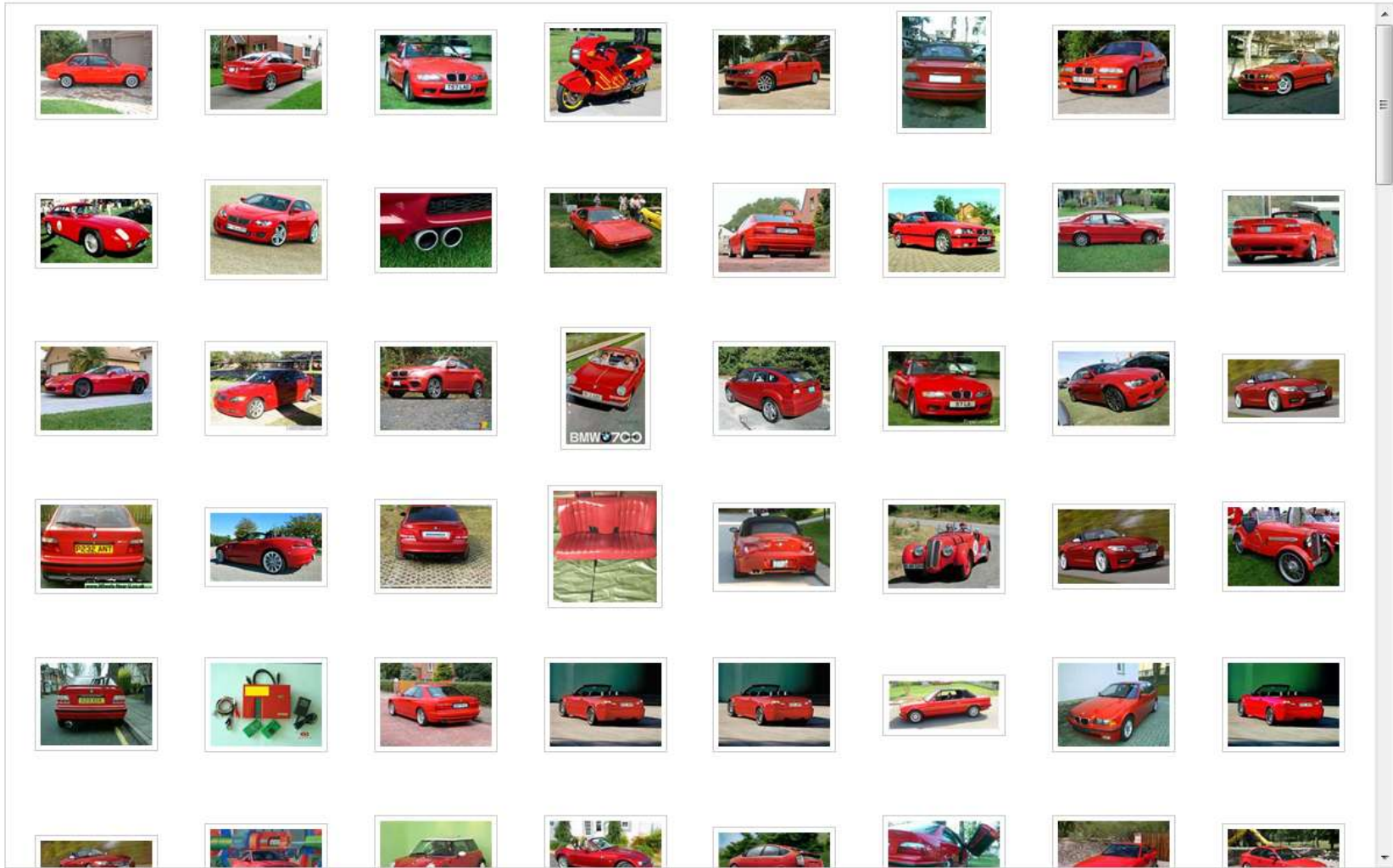




BMW

- BMW
- Images of BMW**
- BMW Cars
- BMW Dealers
- Used BMW
- BMW Parts
- BMW Accessories

IMAGES 1-48 of 1,000 results



- RELATED SEARCHES
- Bmw M3
  - Bmw X6
  - Bmw X5
  - Bmw M6
  - Bmw Front
  - Bmw Logo
  - Bmw Tuning
  - Bmw Rear View
  - Bmw Isetta
  - Bmw Gina

Specific color

Filter using sketch

Color selection palette with a grid of color swatches (red, orange, yellow, green, cyan, blue, purple, pink, light green, brown, black, white).

Sketching tools: a pencil icon and an eraser icon.

A sketching canvas with a checkerboard background and a red rectangular shape drawn on it.

Apply

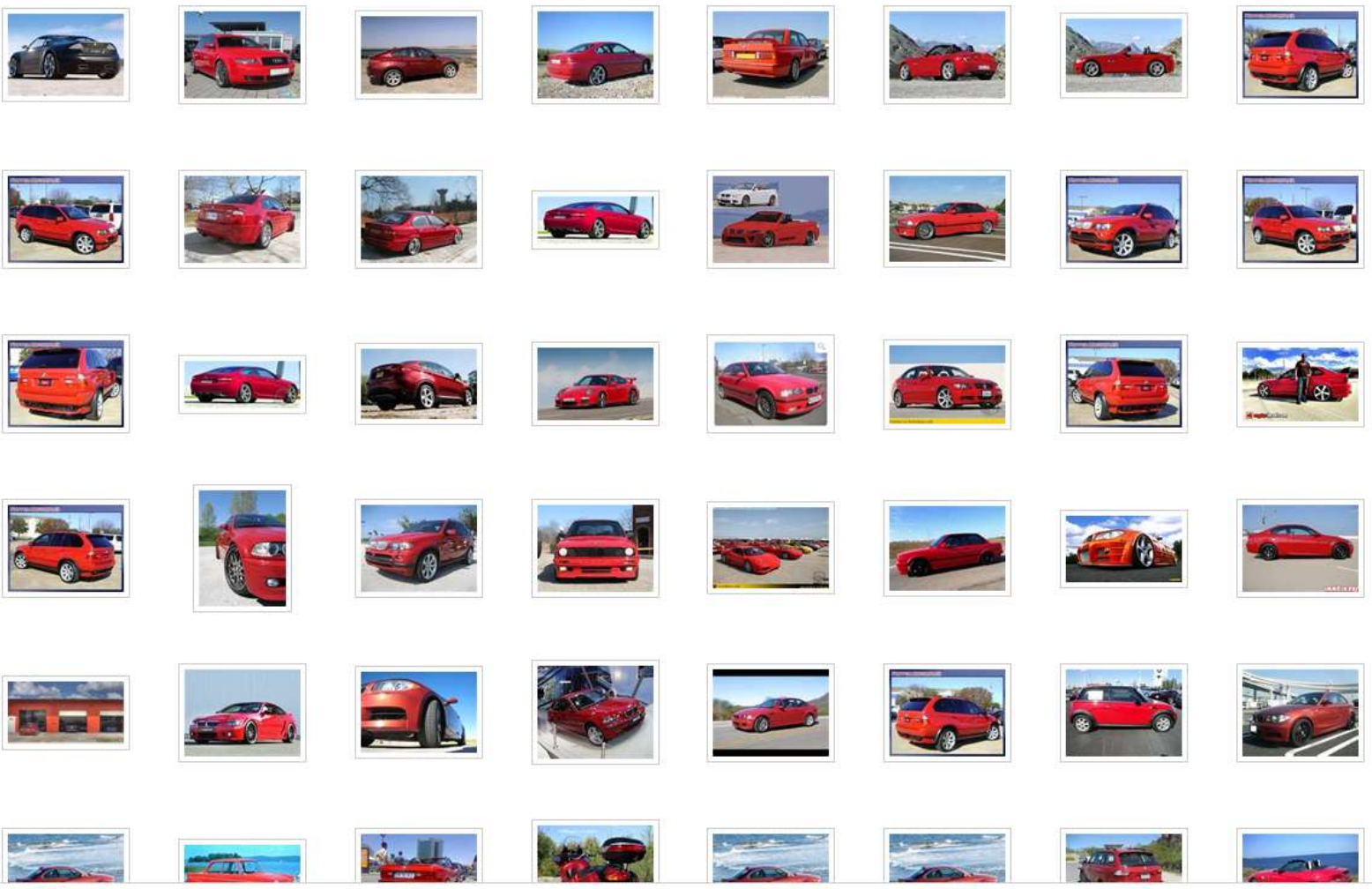
转到 Bing 中国





- BMW
- Images of BMW**
- BMW Cars
- BMW Dealers
- Used BMW
- BMW Parts
- BMW Accessories

IMAGES 1-48 of 1,000 results



- RELATED SEARCHES
- Bmw M3
  - Bmw X6
  - Bmw X5
  - Bmw M6
  - Bmw Front
  - Bmw Logo
  - Bmw Tuning
  - Bmw Rear View
  - Bmw Isetta
  - Bmw Gina

Specific color

Filter using sketch

Color palette with 12 color swatches (red, orange, yellow, green, cyan, blue, purple, pink, light green, brown, black, white).

Sketching tools: pencil, eraser, and a circular refresh icon.

Thumbnail image of a red car with a sketch overlay.

Apply

转到 Bing 中国



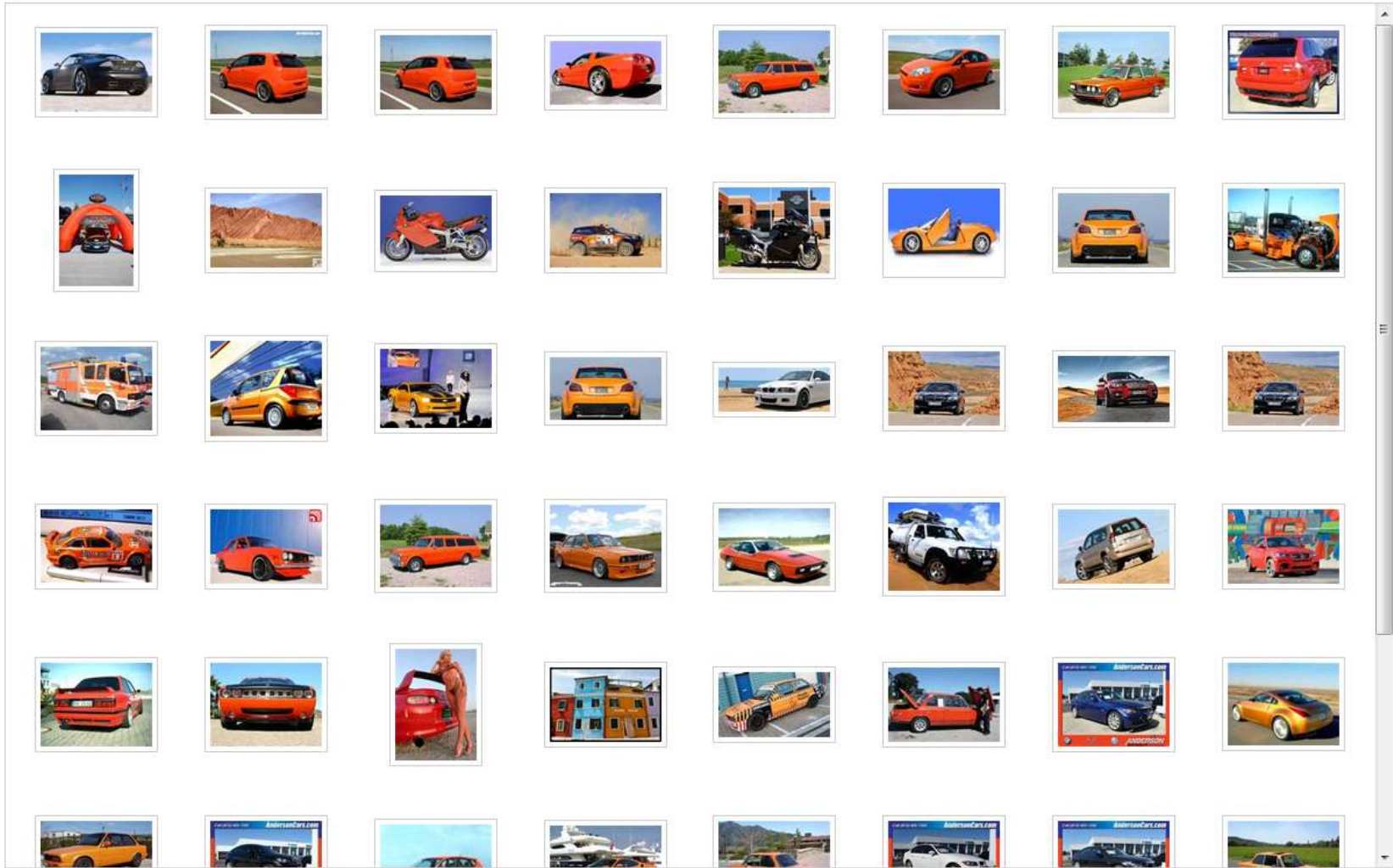


BMW

Make Bing your decision engine

- BMW
- Images of BMW**
- BMW Cars
- BMW Dealers
- Used BMW
- BMW Parts
- BMW Accessories

IMAGES 1-48 of 999 results



- RELATED SEARCHES
- Bmw M3
  - Bmw X6
  - Bmw X5
  - Bmw M6
  - Bmw Front
  - Bmw Logo
  - Bmw Tuning
  - Bmw Rear View
  - Bmw Isetta
  - Bmw Gina

Specific color

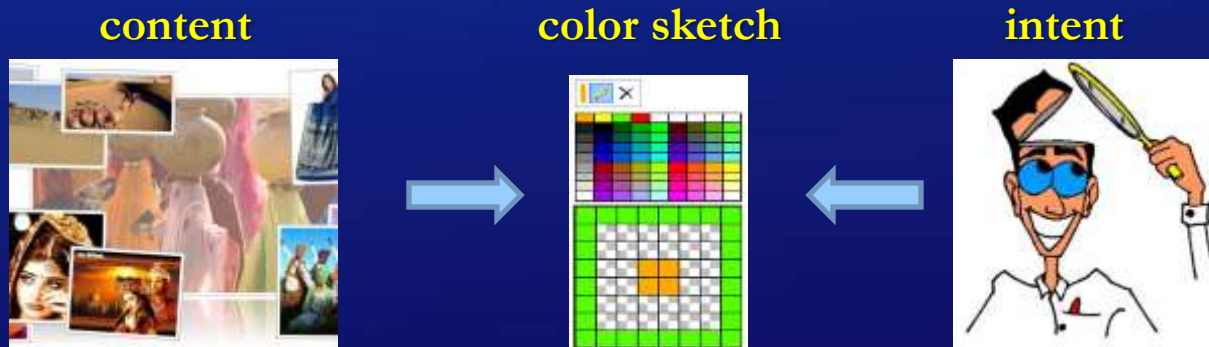
Filter using sketch

Color selection palette with a sketch tool and an 'Apply' button.

转到 Bing 中国

# Why Color-Sketch Works

- What are difficult
  - Semantics is difficult
  - Intent prediction is difficult
- What are easier
  - Using color sketch to describe images' content
  - Using color sketch to describe users' intent



Color sketch is an intermediate representation to connect images' content and users' intent.

# Image Search by Color Sketch

A good example of internet image searching approach combining text, content and interface, which works on web-scale data.



# Limitation of Color Sketch

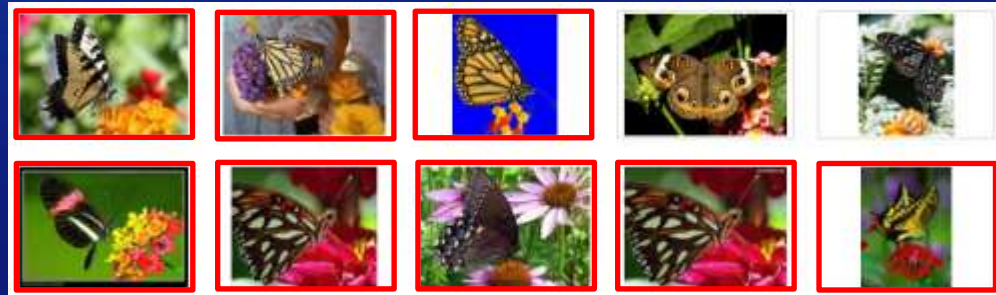
- Only works well for those semantics that can be described by color distribution
- Only works well when people are able to transfer their desire into color distribution

A more complex example:

A flying butterfly on the top-left of a flower.

# Ex5: Search By Concept Sketch

- Not shipped yet 😊
  - But preliminary result will be published as a SIGIR 2010 paper

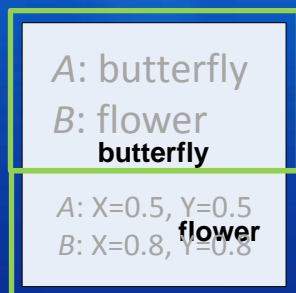


*A concept map query*

Image search results of our system

# Framework

A concept map query



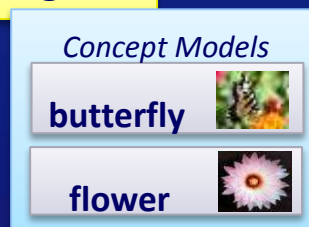
1 Create Candidate Image Set



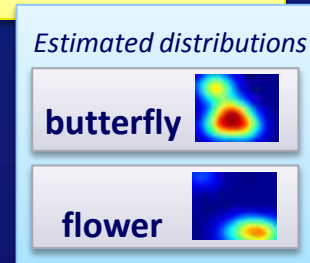
A candidate image



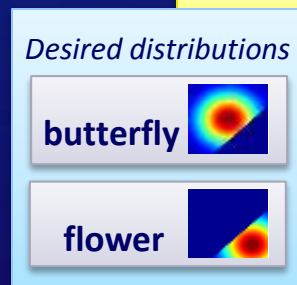
2 Instant Concept Modeling



3 Concept Distribution Estimation



4 Intent Interpretation



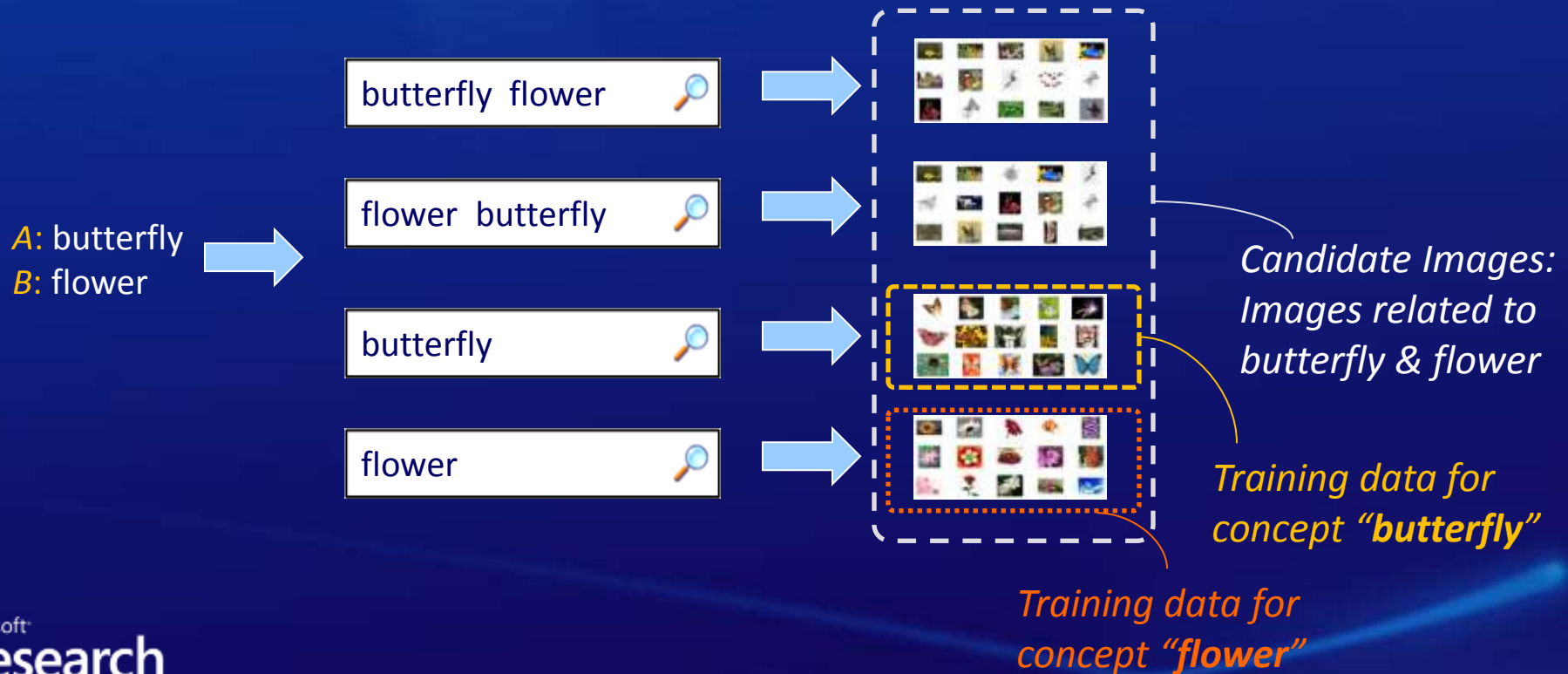
5 Spatial distribution comparison

Relevance score



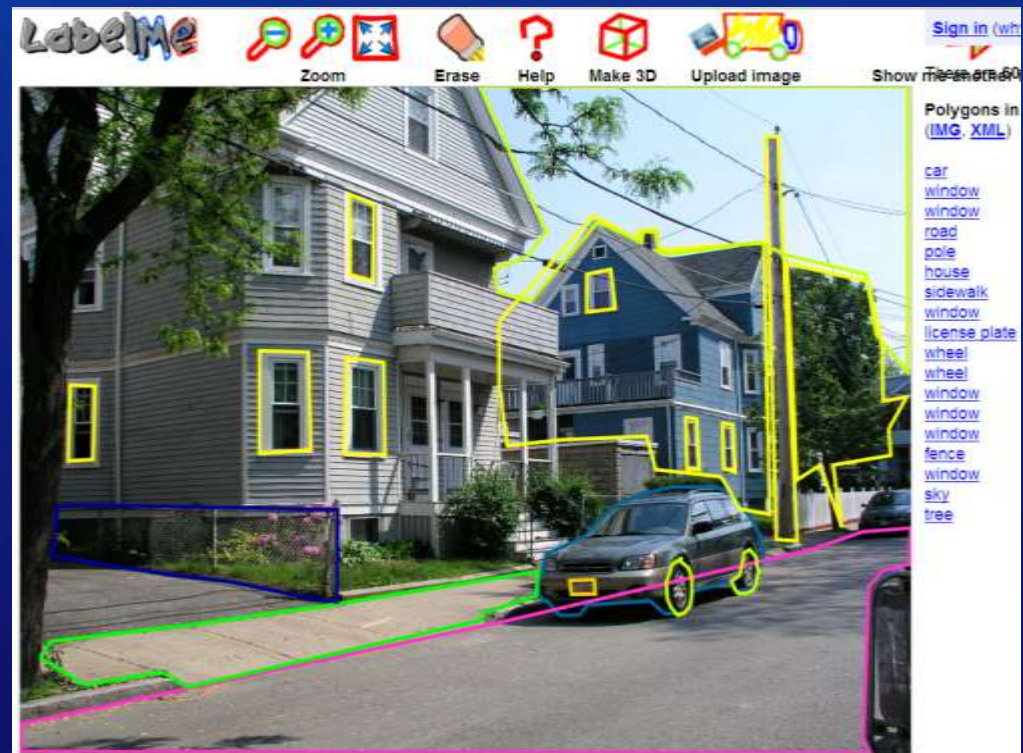
# Creating Candidate Image Set

- Goal: get a group of candidate images from Web
  - Ensure the presences of the concepts
  - Reduce computational cost



# Instant Concept Modeling

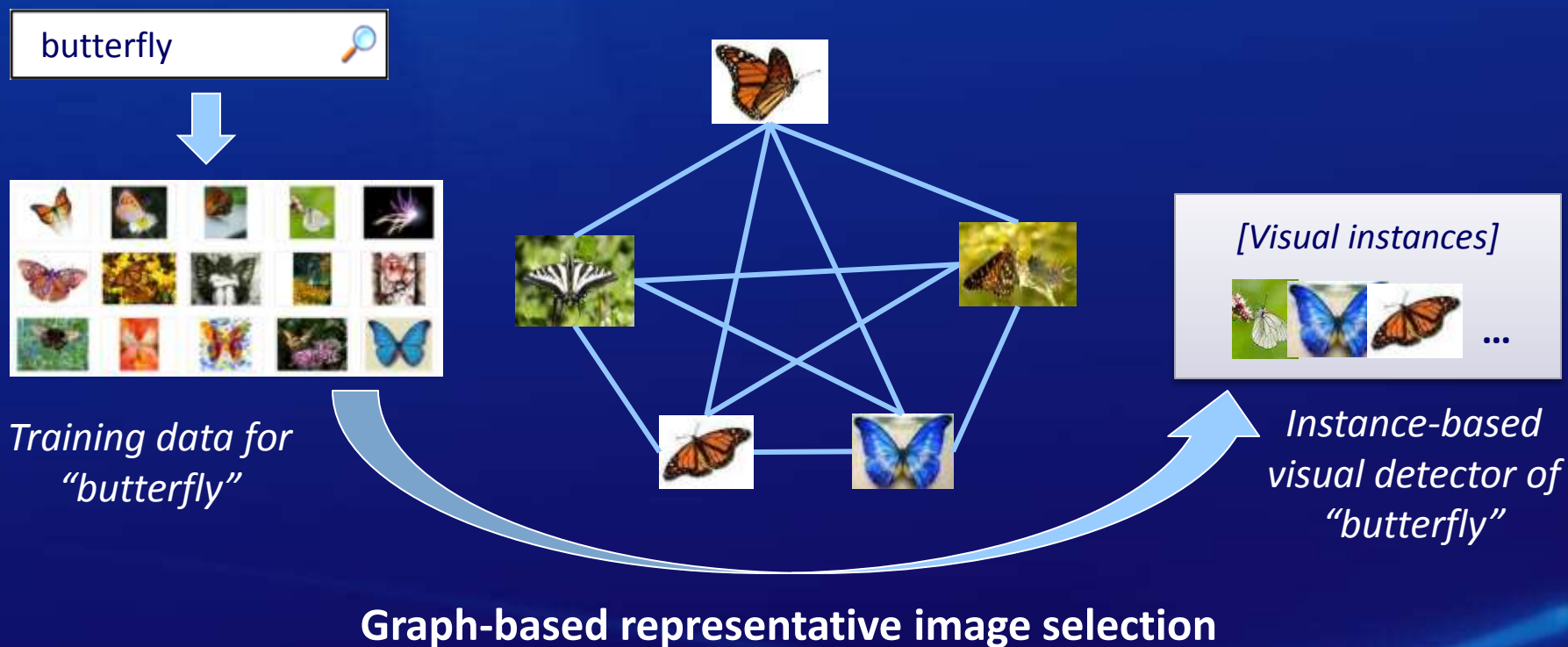
- A possible solution – manual tag-to-region



Manual tagging is expensive

# Instant Concept Modeling

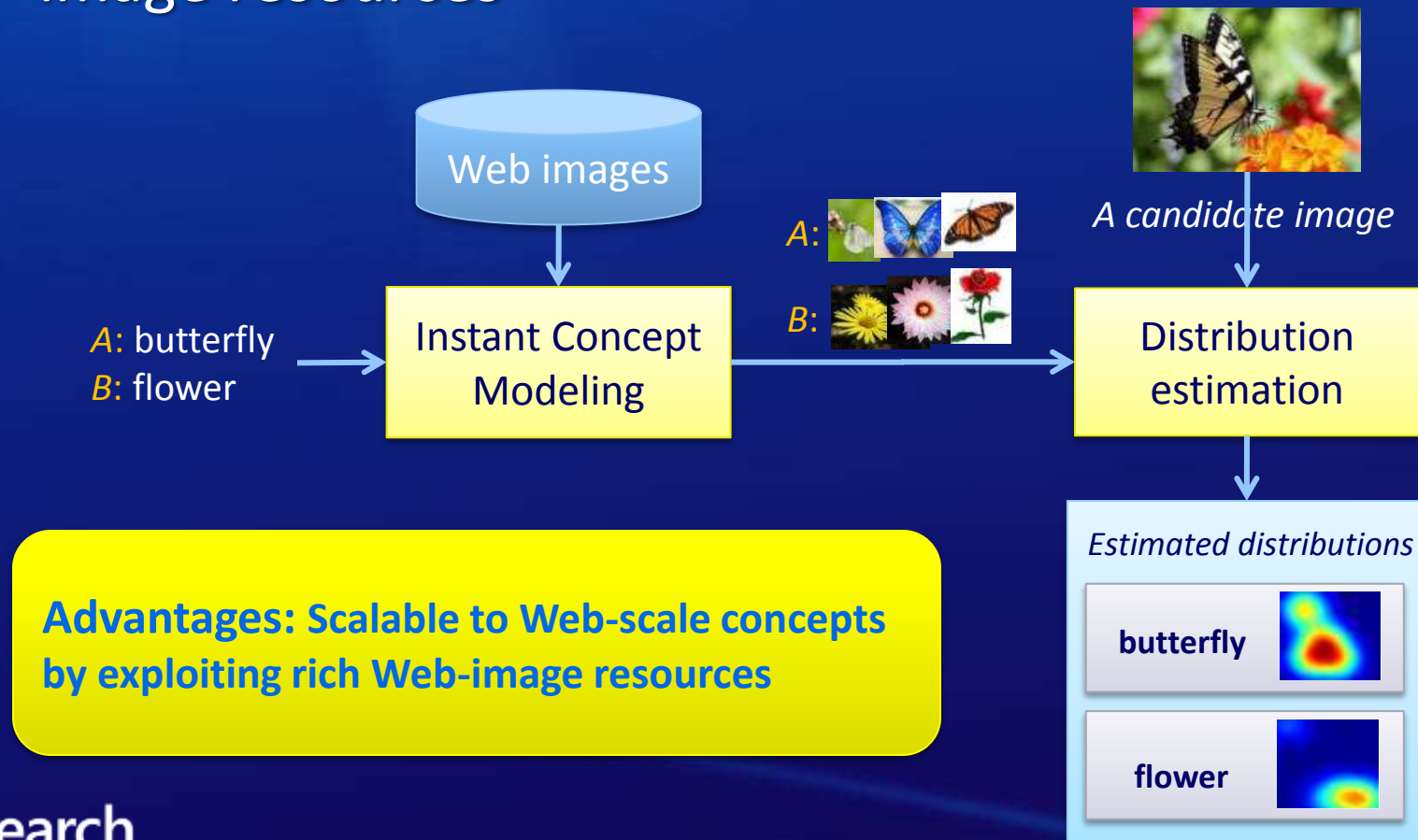
- Goal: To learn a simple (but works well on the candidate image set) visual detector for each concept





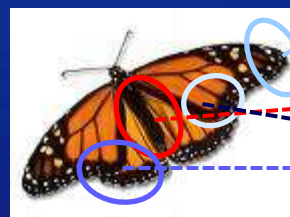
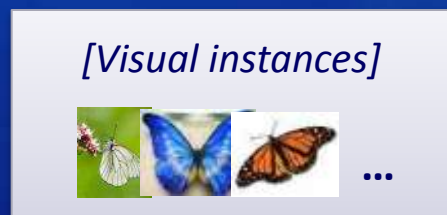
# Concept Distribution Estimation

- Goal: Automatic concept localization leveraging Web-image resources

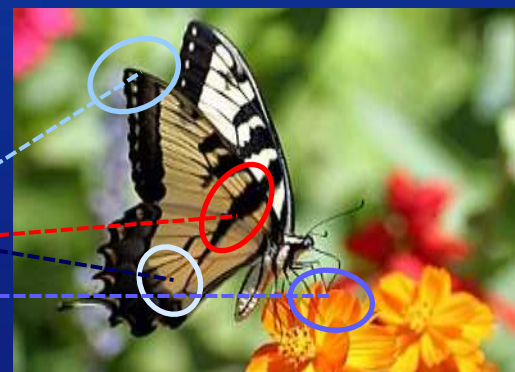


# Concept Distribution Estimation

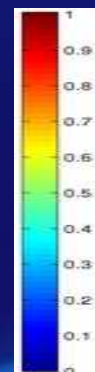
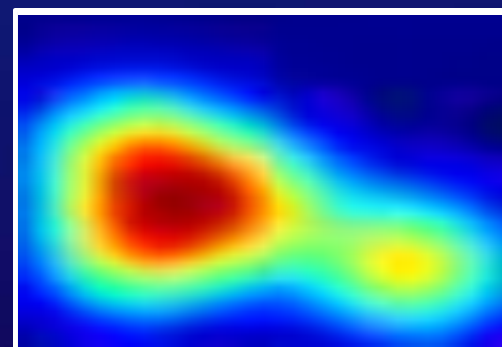
- Goal: estimate the distribution of a concept in an image



A visual instance



A candidate image



Estimated distribution



Estimated distributions of representative butterflies  
in the candidate image

# Intention Interpretation

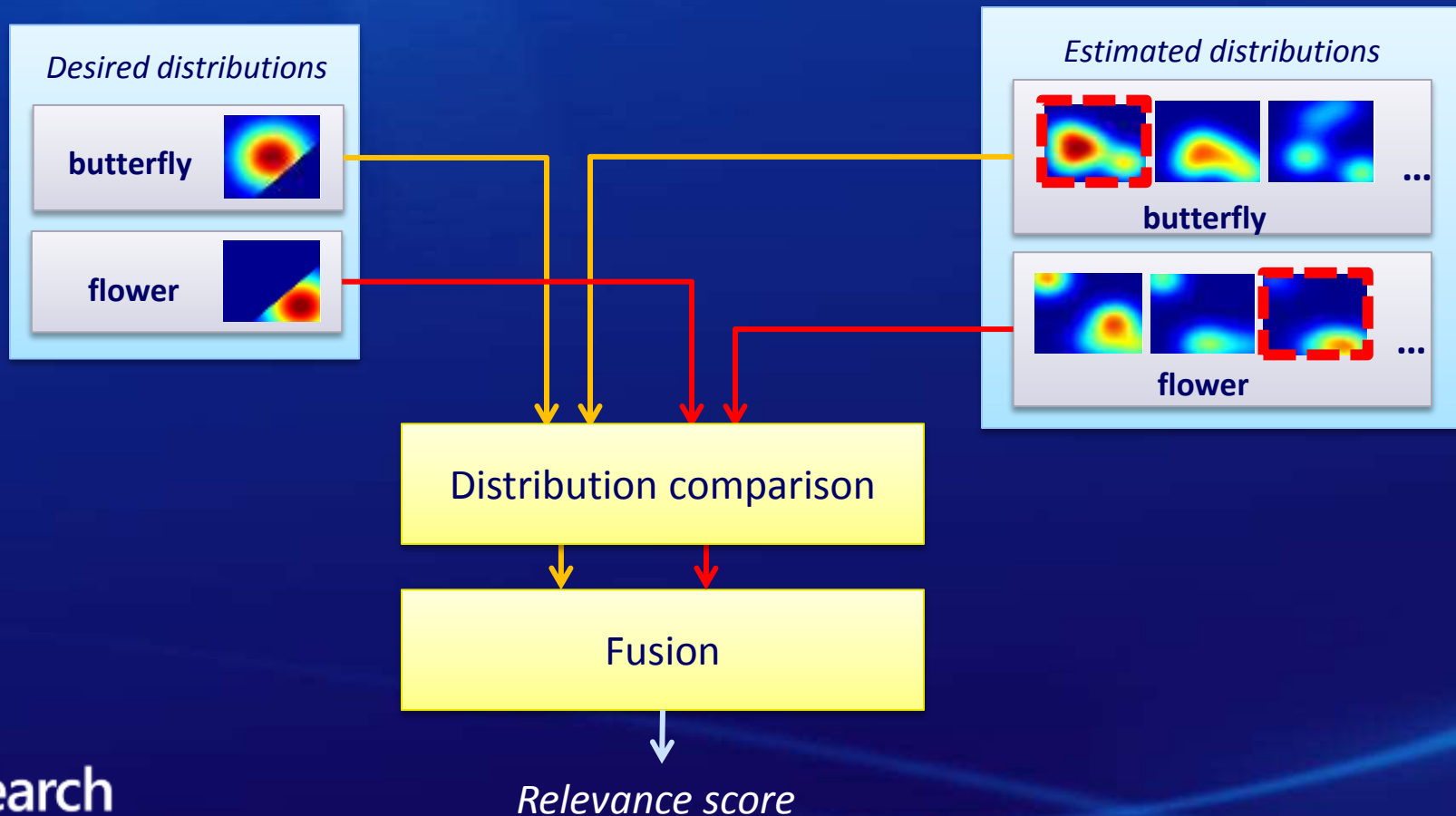
- Goal: represent user's spatial intention as 2D distributions
- Principles
  - A concept should appear near the specified position
  - A concept should not appear at the positions of the other concepts





# Spatial Distribution Comparison

- Goal: compute the similarity of the desired distributions and the estimated distributions

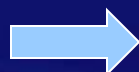


# Search Results Comparison

Task: searching for the images with “snoopy appear at right”

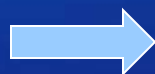


“show similar image”



# Search Results

Task: searching for the images with “snoopy appear at top” / “snoopy appear at left”

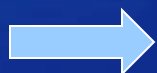




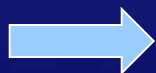
# Search Results Comparison

Task: searching for the images with “a jeep shown above a piece of grass”

jeep grass 



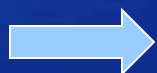
jeep  
grass



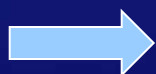
# Search Results Comparison

Task: searching for the images with “a car parked in front of a house”

house car 




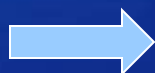
house  
car



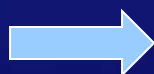
# Search Results Comparison

Task: searching for the images with “a keyboard and a mouse being side by side”

keyboard mouse 



keyboard mouse

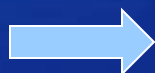




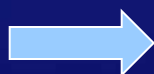
# Search Results Comparison

Task: searching for the images with “sky/Colosseum/grass appear from top to bottom”

sky Colosseum grass 

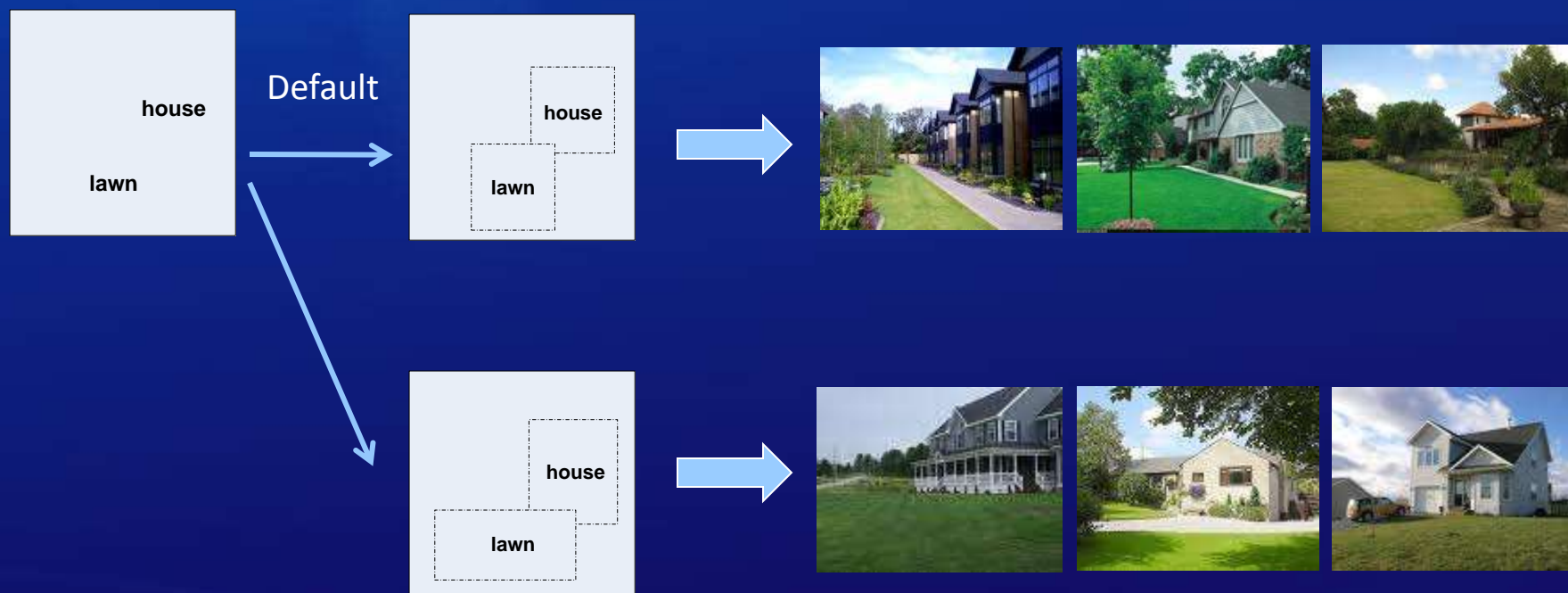


sky  
Colosseum  
grass



# Advanced Function: Influence Scope Adjustment

- Allow users to explicitly specify the occupied region of a concept



Search for the **long narrow** lawn at the bottom of the image

# Advanced Function: Influence Scope Adjustment



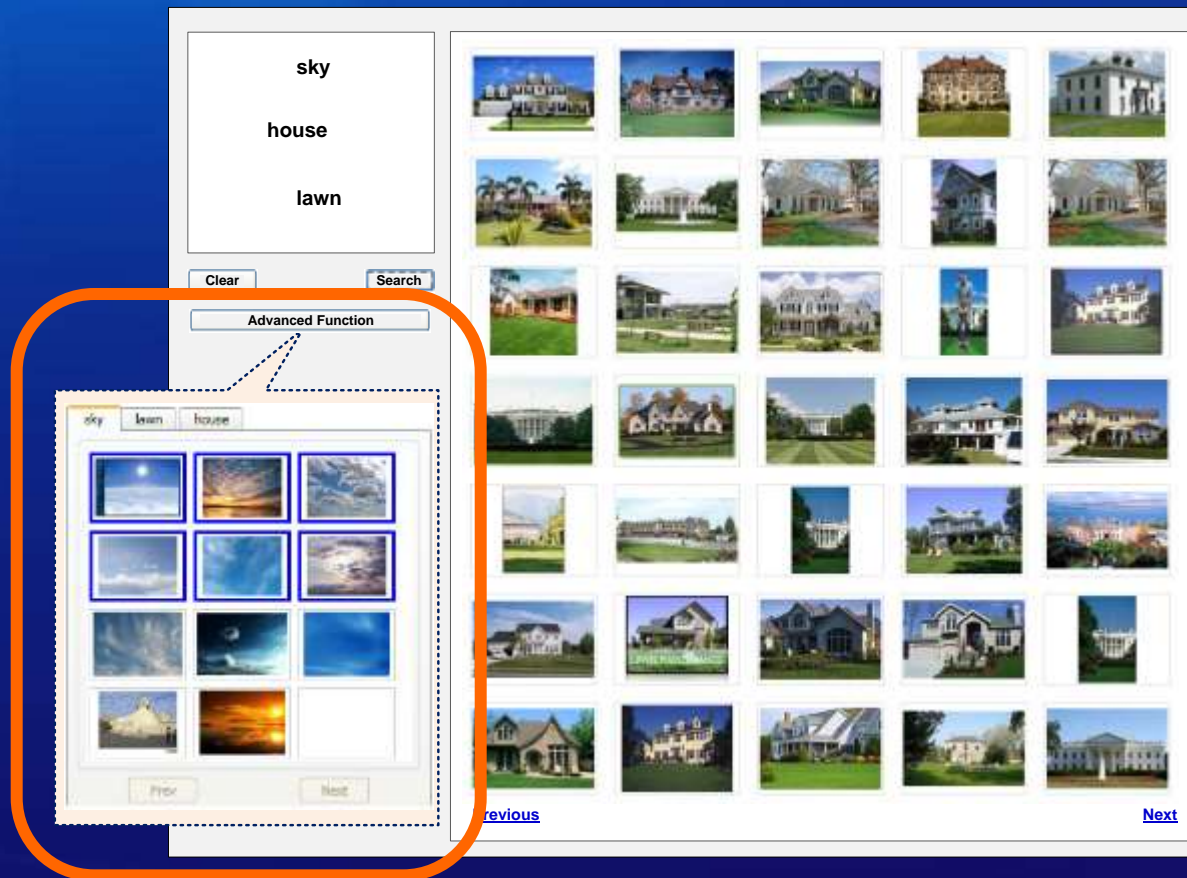
Searching for **small** windmill



Searching for **large** windmill

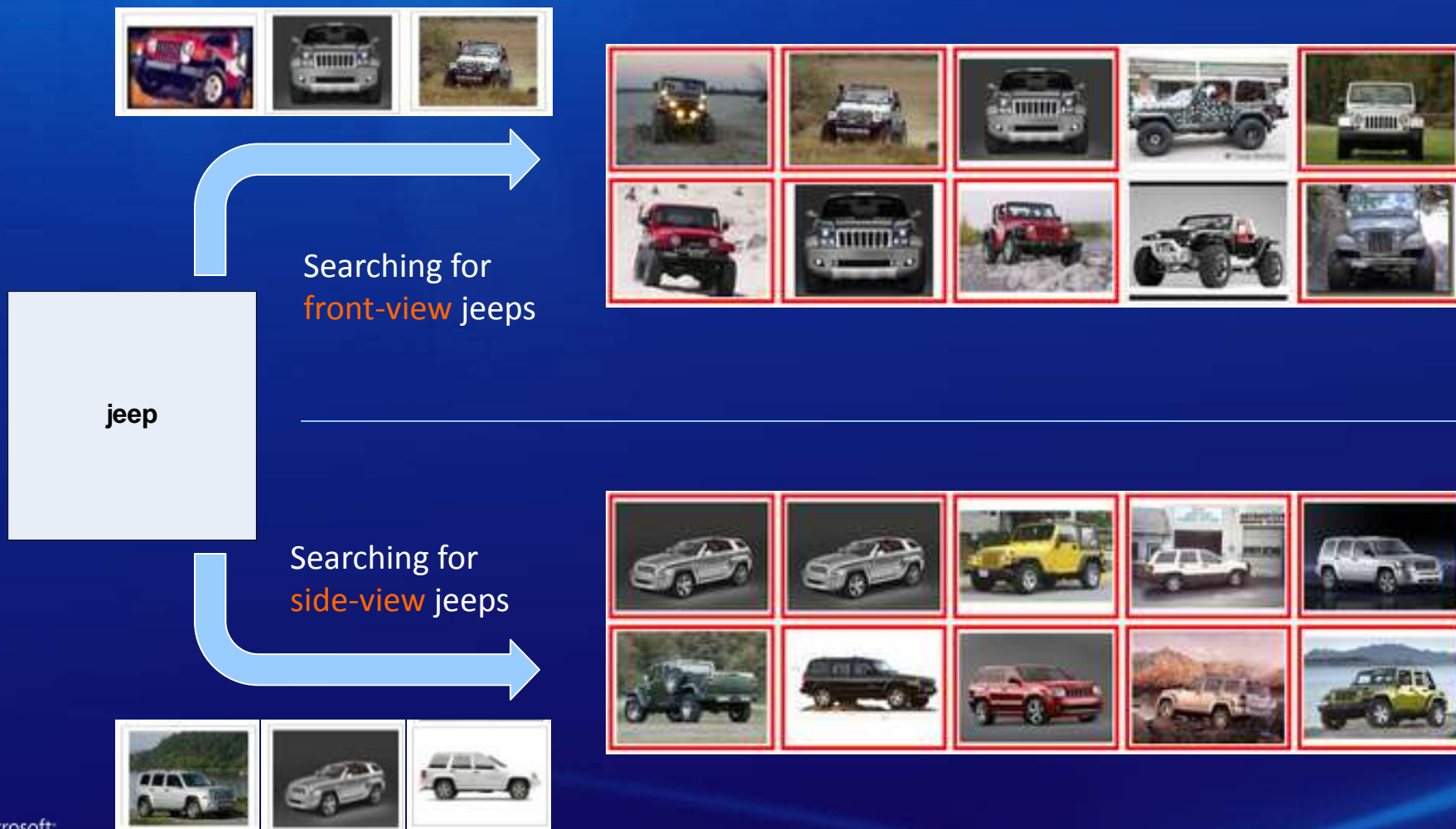


# Advanced Function: Visual Modeling Adjustment

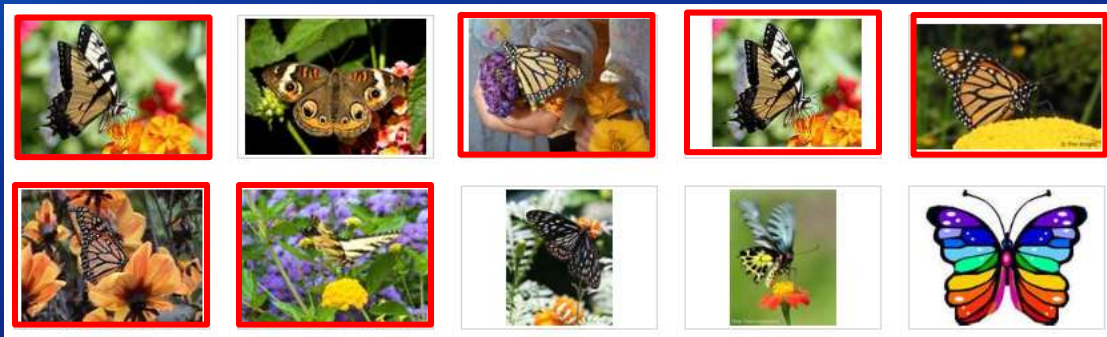


Allow users to indicate or narrow down  
what a desired concept looks like (*visual constraints*)

# Advanced Function: Visual Modeling Adjustment

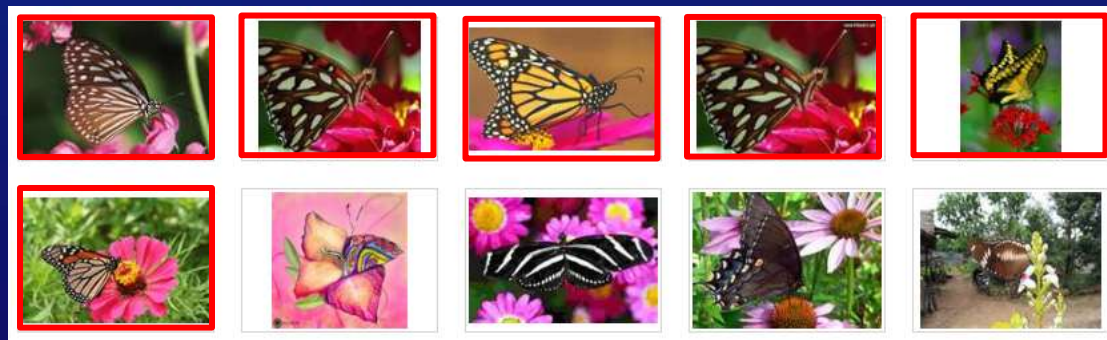
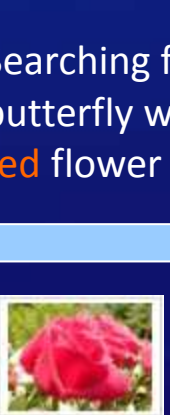


# Advanced Function: Visual Modeling Adjustment



Searching for butterfly with yellow flower

butterfly  
flower



Searching for butterfly with red flower

Visual instances



# Image Search by Concept Sketch

A promising approach to enable content-aware web-scale image search based on mining semantics from web data.

# Summary

- The practical approaches of realizing web-scale content-aware multimedia search
  - Combing text and content
  - Providing interactive interface to express search intent
  - Indexing and searching efficiently
- Five exemplary approaches introduced
  - Smart video thumbnail
  - Show similar images
  - More sizes
  - Search by color sketch
  - Search by concept sketch

# Thank You

